

TdB

CONSULTANCY | PRODUCTS | ANALYSIS

NEW

Fluorescent Lysine Dextran

Choose from:

- FITC (493/520 nm)
- TRITC (550/572 nm)
- Antonia Red™ (583/602 nm)
- ATTO488™ (502/524 nm)
- ATTO647n™ (646/664 nm)

Fixable in cells and tissue
Bright fluorescent signal
Premium quality - narrow fractions

www.tdbcons.com

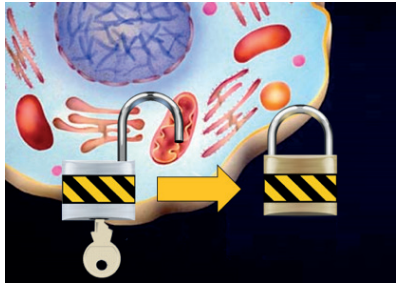
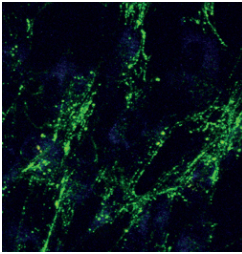


Figure. For clear and bright pictures, perform easy-to-use fixation with paraformaldehyde or glutaraldehyde in cells and tissue.

The following fluorescent Lysine Dextrans
are available:

- 4 kDa
- 10 kDa
- 70 kDa
- 500 kDa

How to order
