

Chemically defined slow freezing medium

Long-term storage solution

Revive Organtech

organ preservation solution / tissue and cell cold preservation media
tissue and cell cryo preservation media / cold and cryo human hepatocyte



- Slow freezing medium for hiPSC/ESC and various cells
- Useful also for tissue
- Inhibit toxicity of DMSO upto 4 hours
- Chemically defined

Product No.	Product	Quantity	Price
RO10003-01	CRYO-GOLD™	100mL	ASK

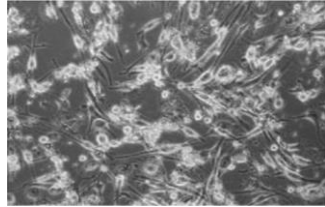
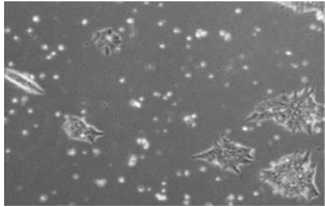
Great quality for various cells

Human iPSC

90% FBS + 10% DMSO + 10 µM ROCK inhibitor

Feeder independent

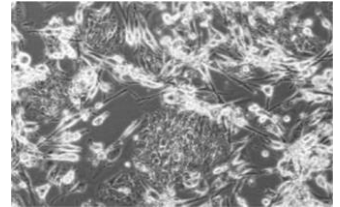
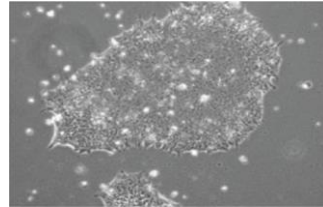
Feeder dependent



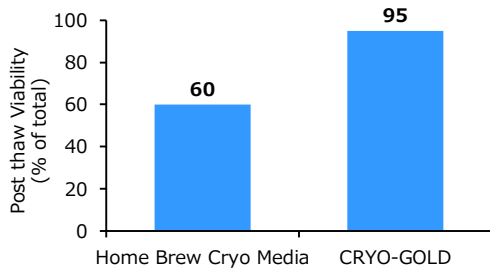
CRYO-GOLD

Feeder independent

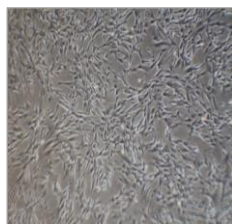
Feeder dependent



Rat primary hepatocyte



Human Amniotic fluid derived MSCs

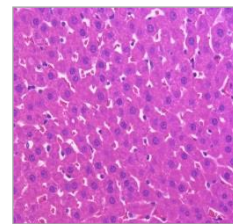


20% FBS+10% DMSO

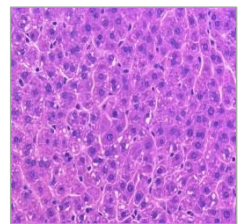


CRYO-GOLD

Rat liver tissue



Fresh liver

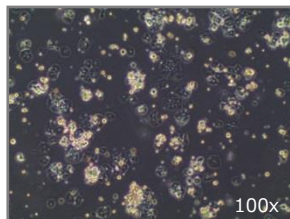
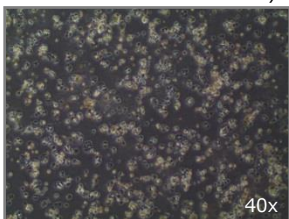


After 7 days freezing at -80°C

Porcine primary hepatocyte

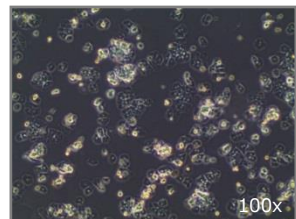
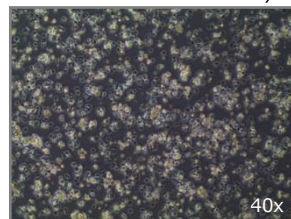
HTK+12% DMSO + Albumin

Plateability: around 60%

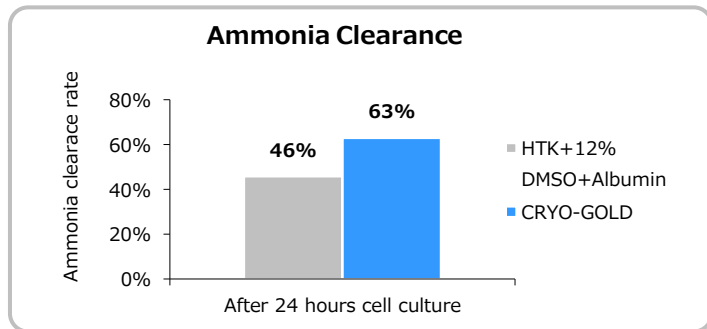
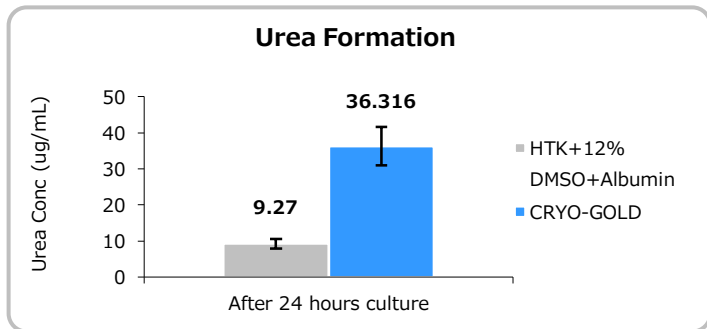
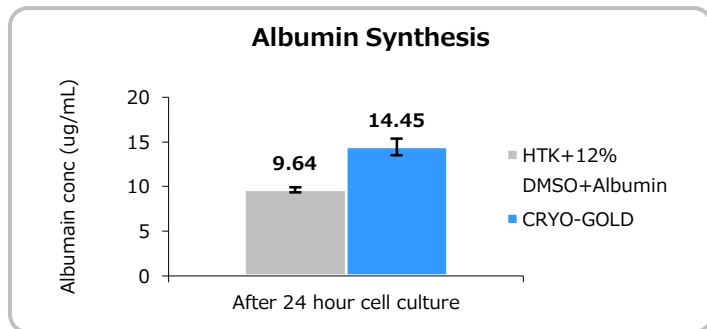
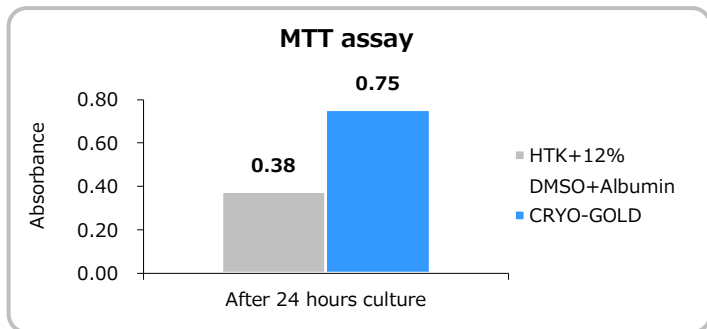


CRYO-GOLD

Plateability: more than 80%

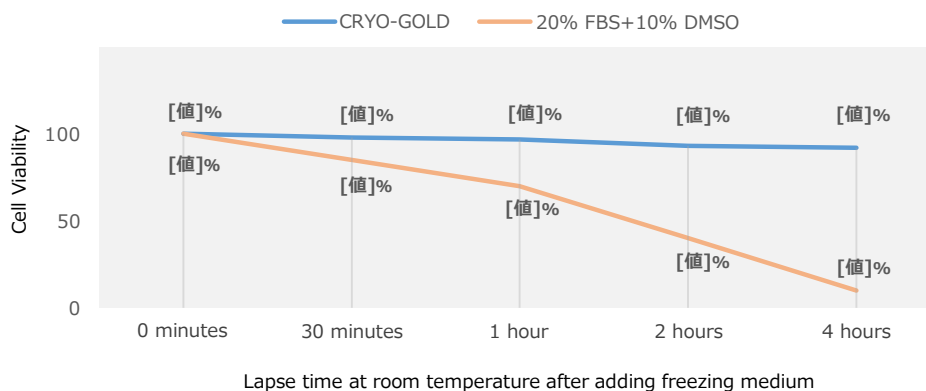


Porcine primary hepatocyte



Inhibit DMSO toxicity upto 4 hours

Rat primary hepatocyte



Cells / Tissues validated as of Feb, 2015

Human	Rat	Mouse	Other animals
iPS cell	Hepatocyte	Skin fibroblast	Hepatocyte(pig)
ES cell	Liver tissue	Neural stem cell	Embryo(horse, cow, dog)
Bone Marrow	Kidney tissue		CHO
Epithelial cell	Heart tissue		MDCK
Adipocyte			Vero
Embryo			

For Research Use Only

Your Local Distributor



Bio-REV Pte. Ltd.

電話: +81 (0)45 6273-3022

〒222-0201 神奈川県横浜市西区

Email: sales@bio-rev.com



ASIA PACIFIC

KDX Shin-yokohama381 Bldg9F
 3-8-11, Shin-yokohama, Kohoku-ku,
 Yokohama, Kanagawa 222-0033, Japan
 Tel: +81 45 475 3887
 Email: info_jp@reprocell.com
 www.reprocell.com/en

