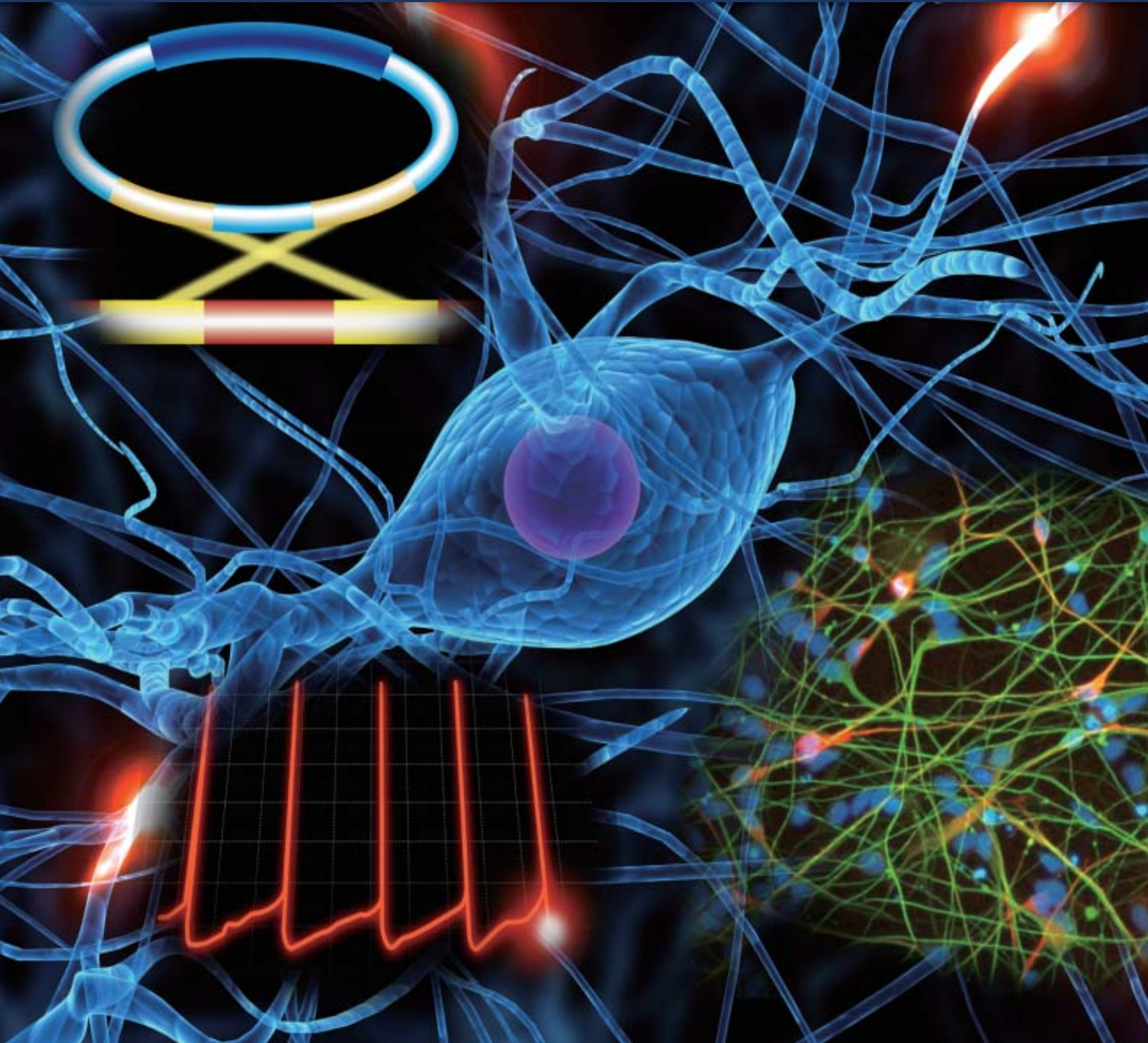


Human iPSC cell-derived Neuron Progenitors



- The world's first commercial human iPSC derived neurons
- Typical neuron markers are expressed
- Release and reuptake of dopamine are detected

ReproNeuro™ is the world's first human iPS cell derived neuron. Expression of neuron markers and dopamine release/reuptake are observed.

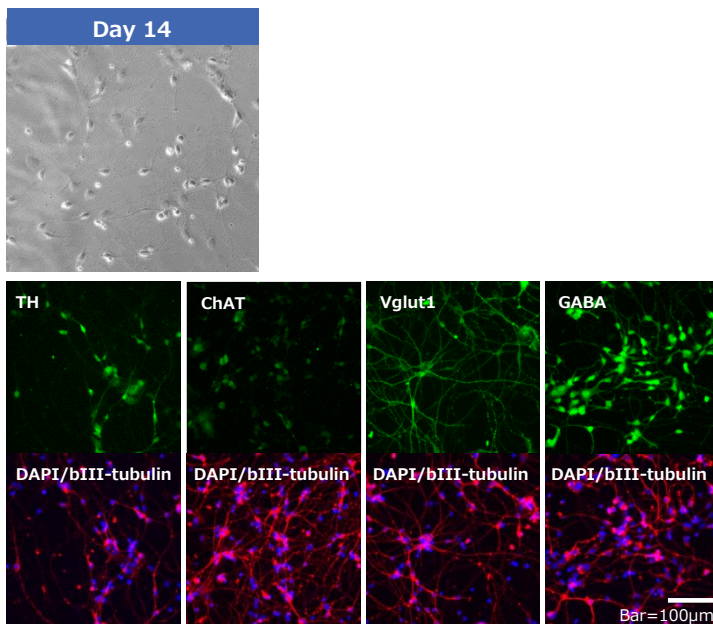
Neurons are obtained after a 14-day culture



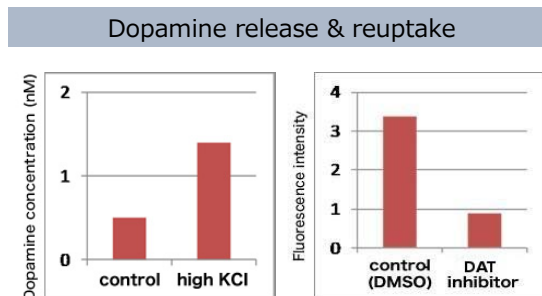
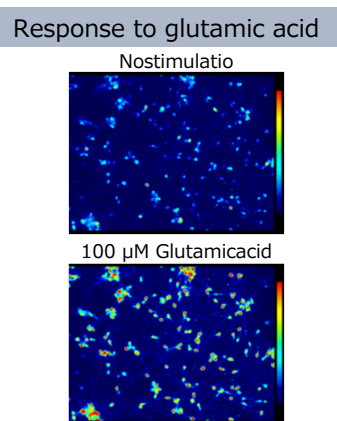
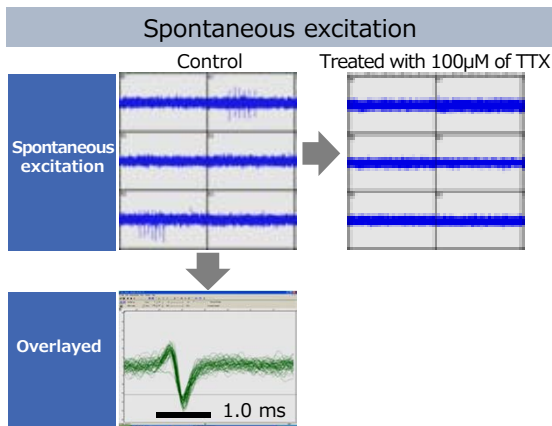
ReproNeuro™ :

- Frozen cells 3 x 10⁶ cells ※
- Thawing Medium
- Maturation Medium
- Additive A
- Coating Solution

※Cells sent in 1 vial, different from photo



Functions as dopaminergic neurons



Product No.	Product	No. of Included cells	Price
RCESDN001	ReproNeuro	human iPS cell-derived neural progenitors 3 x 10 ⁶ cells/vial + Reagents	ASK
RCESDN002	ReproNeuro Small Pack	human iPS cell-derived neural progenitors 3 x 10 ⁵ cells/vial + Reagents	ASK
RCESDN301	ReproNeuro Maturation Medium	Culture medium kit for extended culture of RCESDN001 ReproNeuro Maturation Medium (40mL), Additive A (520µL)	ASK
RCESDN302	ReproNeuro Maturation Medium Small	Culture medium kit for extended culture of RCESDN002 ReproNeuro Maturation Medium (5mL), Additive A (100µL)	ASK
RCESDN303	ReproNeuro Thawing Medium (30mL)	Thawing Medium for RCESDN001/002 for additional need	ASK
RCESDN304	ReproNeuro Coat (150µL)	Coating Solution for RCESDN001/002 for additional need	ASK

Visit ReproCELL's web site for

- Up-to-date information on ReproNeuro™
- Handling and assay procedure: instruction movies available
- Detailed information about kit contents and refill reagents

Note On receiving the kit, immediately transfer the frozen cells to liquid nitrogen and use the cells as soon as possible. These cells are very sensitive to changes in temperature. For optimal viability, follow the instruction strictly.

For Research Use Only



ASIA PACIFIC
 KDX Shin-yokohama381 Bldg9F
 3-8-11, Shin-yokohama, Kohoku-ku, Yokohama,
 Kanagawa 222-0033, Japan
 Tel: +81 45 475 3887
 Email: info_jp@reprocell.com
www.reprocell.com/en



AMERICAS
 51 Moulton Street Cambridge,
 MA 02138, USA
 Tel: (617) 245-0000
 Email: info@stemgent.com
www.stemgent.com



EUROPE
 NETPark Incubator
 Thomas Wright Way Sedgefield, Co. Durham
 TS21 3FD, UNITED KINGDOM
 Tel: +44 (0)1740 625 526
 Email: info@reinnervate.com
www.reinnervate.com