

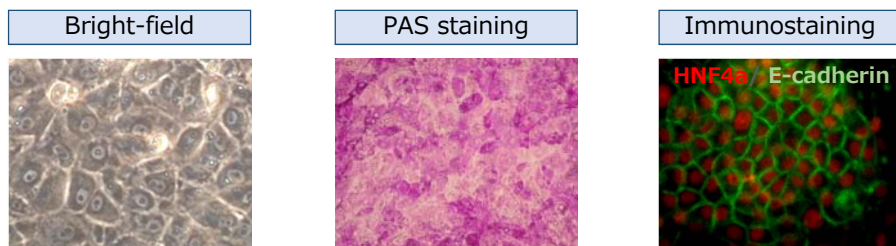
- Robust CYP activity
- Expression of transporters (NTCP and OATP1B1, etc.)
- Longer retention of CYP activity
- Hepatotoxic response similar to primary hepatocytes
- CYP induction assay and hepatotoxicity assay services available



### Kit contents:

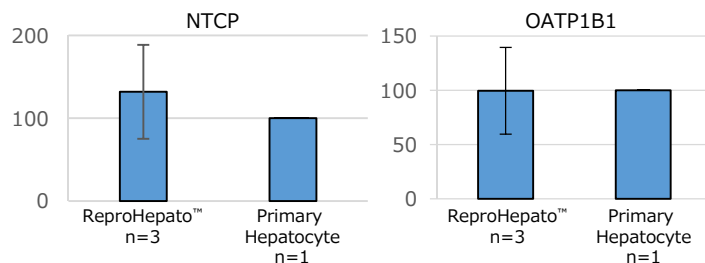
- Frozen cells (8.25 million cells/vial)
- Thawing Medium
- Maintenance medium & supplement
- Assay Medium & supplement
- Coating solution

## Basic characteristics of ReproHepato™

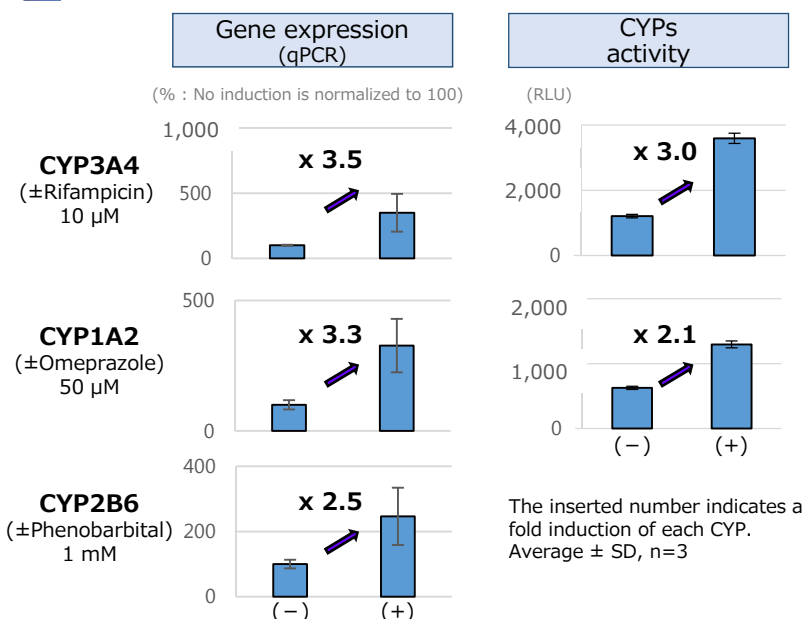


### Gene expression (qPCR)

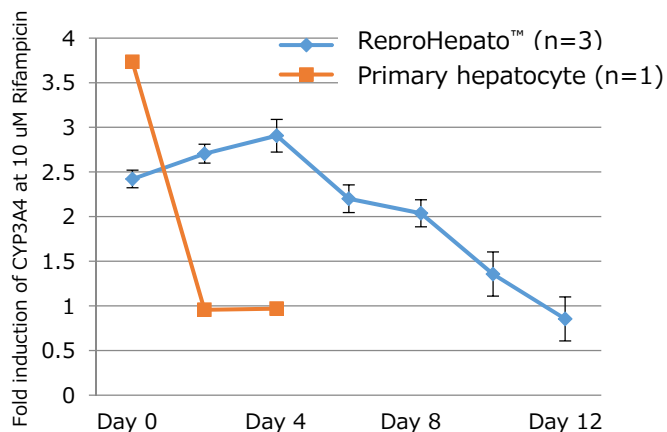
Average ± SD  
(% : Primary hepatocyte is normalized to 100)



## Induction capability of CYPs



## Longer retention of CYP activity



**Induction activity of ReproHepato™ is maintained longer (ca. Day 8) than primary hepatocyte.**

Rifampicin added two days before each day.  
Average ± SD

## Hepatotoxicity (CellTiter-Glo® Luminescent Cell Viability Assay : Promega)

IC50 (μM)	Acetaminophen	Amiodarone	Cyclophosphamide	Diclofenac	Flutamide
<b>ReproHepato™</b>	<b>2,525</b>	<b>0.5</b>	<b>3,030</b>	<b>50.5</b>	<b>5.1</b>
Human hepatocytes*	6,500	10	8,140	300	75
Human hepatic cell line A*	7,500	40	No Data	No Data	50
Human hepatic cell line B*	29,755	79	22,027	399	231
Rat hepatocytes*	14,014	38	3,657	263	10

**The response to the compounds of hepatotoxicity is similar to primary hepatocytes.**

\* : Data is cited from several papers.

Visit ReproCELL's web site for

- Additional information on ReproHepato™
- Handling and assay procedure
- Detailed information about kit contents and additional reagents

ReproHepato

**Note** On receiving the kit, immediately transfer the frozen cells to liquid nitrogen and use the cells as soon as possible. These cells are very sensitive to changes in temperature. For optimal viability, follow the instruction strictly.

**For Research Use Only**



E-mail  
info\_en@reprocell.com

### Headquarters

ReproCELL, Inc.  
KDX Shin-yokohama 381 Bldg 9F  
3-8-11, Shin-yokohama, Kohoku-ku,  
Yokohama, Kanagawa 222-0033, Japan  
Tel: +81 (0) 45 475 3887  
Fax: +81 (0) 45 474 1006

### North America

ReproCELL USA, Inc.  
24 Denby Rd. Suite 220  
Boston, MA 02134  
Tel: +1-617-987-2015  
Fax: +1-617-507-2452