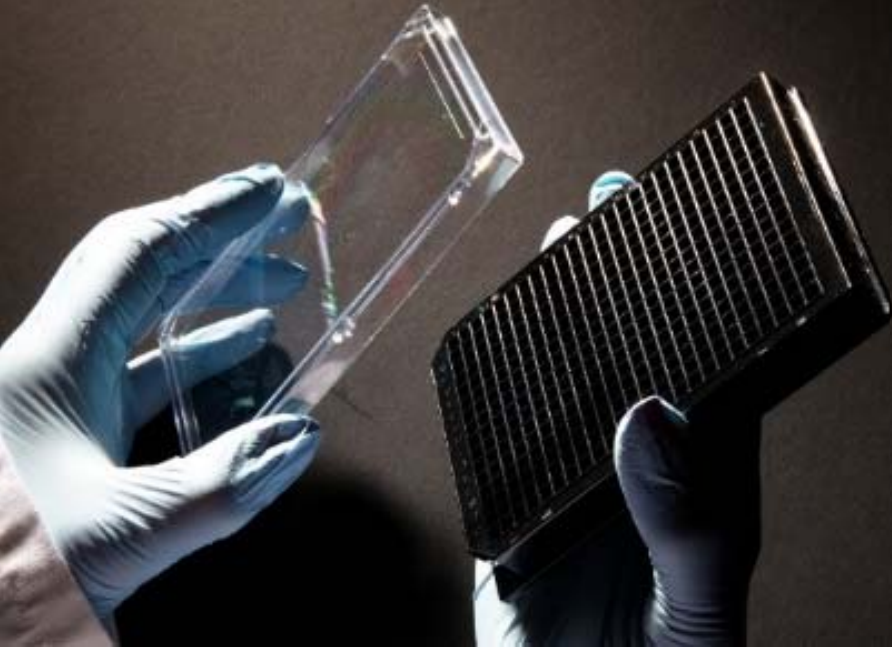


Achieve genuine 3D cell culture, simply and routinely

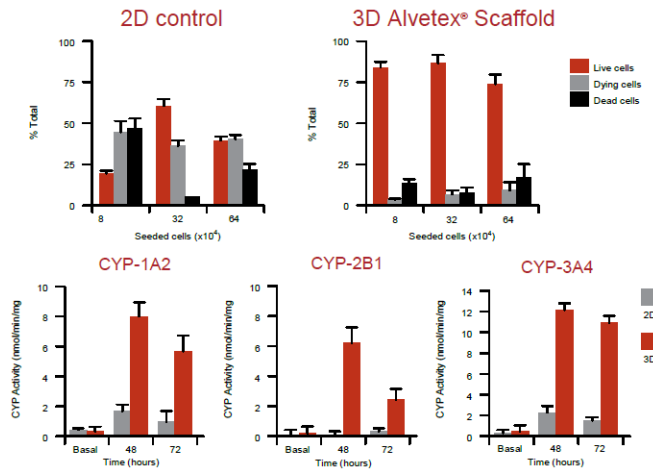


alvetex scaffold Alvetex® Scaffold Highly porous polystyrene scaffold designed for 3D cell culture

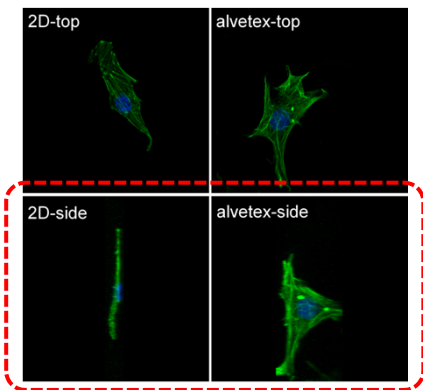
Example applications

- Cell growth / health assay (cytotoxicity measurements)
- Migration and invasion assays
- Culture and differentiation (osteoblast/adipocyte/neural cell)
- Reconstruction of tissue structures (gut, liver, skin model, bone etc)
- Enhanced culture of primary cells
- Co-culture (neuron+glia cell, keratinocyte+fibroblast, cancer cell+fibroblast, hepatocyte+endothelial cell)

Comparison of primary rat hepatocytes between 2D and 3D cell culture using Alvetex® Scaffold

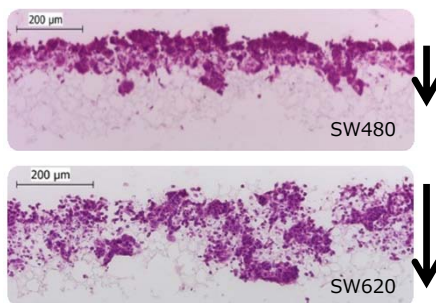


Comparison of the cell morphology



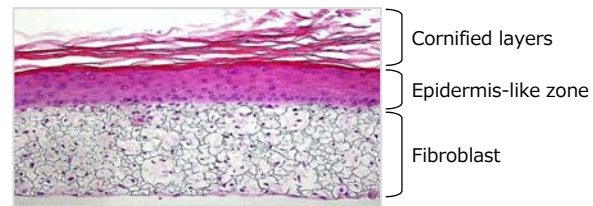
Fluorescent confocal microscopy demonstrates the true 3D structure of cells cultured in Alvetex® Scaffold.

Invasion of cancer cells



3D cell invasion assay using Alvetex® Scaffold. (Publications available)

Multi-layered skin model

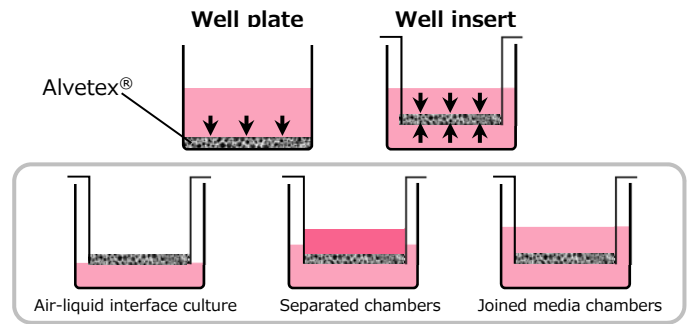


Full thickness skin co-culture model using primary human dermal fibroblasts and keratinocytes. (Courtesy of Henkel GmbH)

Alvetex® Formats

Multi-well plate: Cells growing in 3D are exposed to culture medium from above only, and therefore predominantly reside in the top portion of scaffold.

Well insert: Long term 3D culture as cells can receive nutrients from media above and below the membrane, sustaining optimal 3D cell growth.



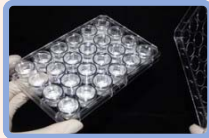
Products

Note: All items are sterile blister packed.

Alvetex® product formats ensure that you can design your experiments to suit your specific investigation or application.

alvetex scaffold
(200 µm thick / 40 µm void diameter)

Multi-well plate formats



Well insert formats



Perfusion plate*

*Note: Peristaltic pump and tubing not included.



Product	Presentation	Product No.	Price
Alvetex® Scaffold Plate Starter Kit	1 × 12 well plate 1 × 24 well plate 1 × 96 well plate	AVP-KIT-1	ASK
Alvetex® Scaffold Well Insert Starter Kit	6 × 6 well inserts 6 × 12 well inserts 1 × well insert holder in a deep Petri dish	AVP-KIT-2	ASK
Alvetex® Scaffold 12 well plate	2 plates	AVP002-2	ASK
	10 plates	AVP002-10	ASK
	80 plates	AVP002-80	ASK
	320 plates	AVP002-320	ASK
Alvetex® Scaffold 24 well plate	2 plates	AVP006-2	ASK
	10 plates	AVP006-10	ASK
	80 plates	AVP006-80	ASK
	320 plates	AVP006-320	ASK
Alvetex® Scaffold 96 well plate	2 plates	AVP009-2	ASK
	10 plates	AVP009-10	ASK
	80 plates	AVP009-80	ASK
	320 plates	AVP009-320	ASK
Alvetex® Scaffold 384 well plate	2 plates	AVP010-2	ASK
	10 plates	AVP010-10	ASK
	80 plates	AVP010-80	ASK
	320 plates	AVP010-320	ASK
Alvetex® Scaffold 6 well insert	3 insert plates	AVP004-3	ASK
	12 insert plates	AVP004-12	ASK
	48 insert plates	AVP004-48	ASK
	96 insert plates	AVP004-96	ASK
Alvetex® Scaffold 12 well insert	3 insert plates	AVP005-3	ASK
	12 insert plates	AVP005-12	ASK
	48 insert plates	AVP005-48	ASK
	96 insert plates	AVP005-96	ASK
Perfusion plate* (with Luer locks)	2 units	AVP011-2	ASK
	10 units	AVP011-10	ASK
Perfusion plate* (with Luer locks) and Alvetex® Scaffold 6 well inserts	2 × Perfusion plates / 12 × 6 well inserts	AVP-KIT-3	ASK
	5 × Perfusion plates / 48 × 6 well inserts	AVP-KIT-5	ASK
Perfusion plate* (with Luer locks) and Alvetex® Scaffold 12 well inserts	2 × Perfusion plates / 12 × 12 well inserts	AVP-KIT-4	ASK
	5 × Perfusion plates / 48 × 12 well inserts	AVP-KIT-6	ASK

alvetex strata
(200 µm thick / 13 µm void diameter)

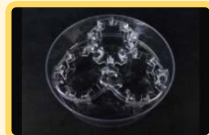
Well insert formats



Product	Presentation	Product No.	Price
Alvetex® Strata 6 well inserts	3 inserts	STP004-3	ASK
	12 inserts	STP004-12	ASK
	48 inserts	STP004-48	ASK
Alvetex® Strata 12 well inserts	3 inserts	STP005-3	ASK
	12 inserts	STP005-12	ASK
	48 inserts	STP005-48	ASK

Related product

Well insert holder



Product	Presentation	Product No.	Price
Well insert holder and deep Petri-dish	2 units	AVP015-2	ASK

Inquiry

Email : info_en@reprocell.com

Alvetex® is a trademark of Reinnervate Ltd.

For Research Use Only

Distributor

ReproCELL, Inc.
KDX Shin-yokohama 381 Bldg 9F
3-8-11, Shin-yokohama, Kohoku-ku, Yokohama,
Kanagawa 222-0033, Japan
Tel: +81 (0) 45 475 3887 Fax: +81 (0) 45 474 1006

