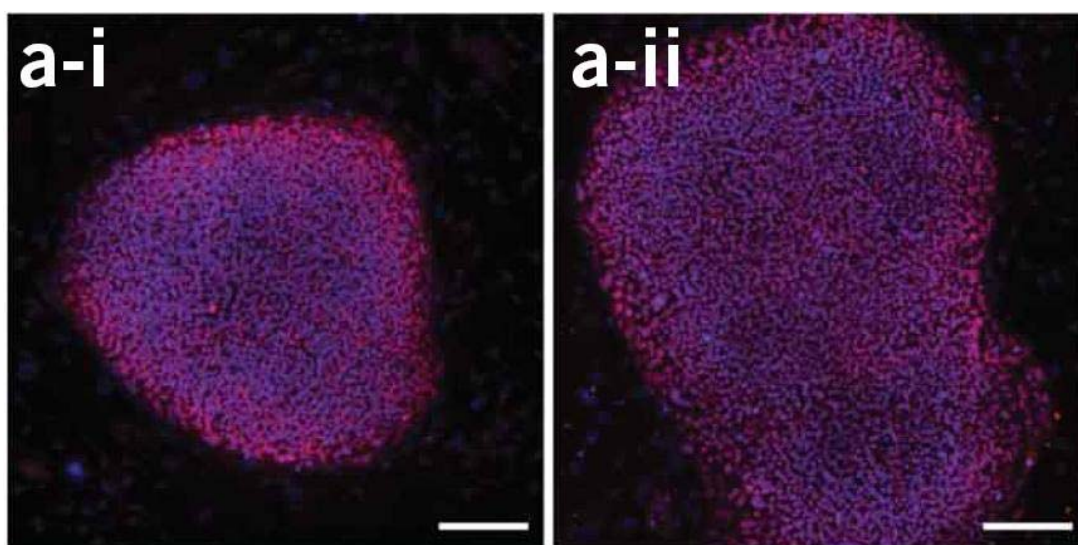


ABM Inc. iPS Cell Lines & Feeder Cells

Induced Pluripotent Stem Cells (iPSCs) are derived from somatic cells by reprogramming the cells back into an undifferentiated state. These iPSCs (Induced Pluripotent Stem Cells) exhibit the essential characteristics of embryonic stem (ES) cells and offer great promise for cell-replacement therapies, regenerative medicine and disease modeling. ABM provides licensed iPSCs of different origins and induction method from institutes around the world.

iPS-14/27 Cells

iPS-14/27 was generated using lentiviral transduction of human fetal lung fibroblasts (MRC-5) with cMYC, KLF4, OCT4 and SOX2. Positive for pluripotency markers Nanog, Tra-1-60, Tra-1-80 and SSEA-3 by immunofluorescence and flow cytometry. Capable of differentiating into derivatives of the 3 germ layers.



Two iPS clones iPS-14 (a-i) and iPS-27 (a-ii) were generated and screened for OCT4 (red).

Image from Chambers *et al.* Highly efficient neural conversion of hES and iPS cells by dual inhibition of SMAD signaling. *Nat Biotechnol.* 26, 275-280 (2009)

References

1. Stuart M Chambers, Christopher A Fasano, Eirni P Papapetrou, Mark Tomishima, Michel Sadelain and Lorenz Studer. Highly efficient neural conversion of human ES and iPS cells by dual inhibition of SMAD signaling. *Nat Biotechnol.* 26, 275-280 (2009).
2. Papapetrou EP, Tomishima MJ, Chambers SM, Mica Y, Reed E, Menon J, Tabar V, Mo Q, Studer L, Sadelain M. Stoichiometric and temporal requirements of Oct4, Sox2, Klf4, and c-Myc expression for efficient human iPSC induction and differentiation. *Proc Natl Acad Sci U S A.* Aug 4; 106(31):12759-64. (2009).

Ordering Information

Product Name	Catalog No.	Description	Packaging Size
iPS-14 Cells	T2007	iPS induced Fetal Lung Fibroblasts (MRC-5)	1.0ml (10 ⁶ Cells/ml)
iPS-27 Cells	T2008	iPS induced Fetal Lung Fibroblasts (MRC-5)	1.0ml (10 ⁶ Cells/ml)

iPSCs Feeder Cells

During the course of induced pluripotent stem cell (iPSC) culture, human or mouse embryonic fibroblasts are added to the inner surface of the dish. Usually these cells have been treated so they will not divide, and will survive certain treatments, such as the addition of drugs to the culture. This coating layer of cells is called a feeder layer. The cells in the bottom of the culture dish provide the inner cell mass cells an adhesive surface to which they can attach and release nutrients into the culture medium. For your convenience, ABM Inc. supplies various feeder cell lines for your iPSC culture purposes.

Ordering Information

Product Name	Catalog No.	Description	Packaging Size
Mouse Embryonic Fibroblasts (Embryo)	T2001	Mus musculus (mouse) embryonic fibroblast feeder cells (adherent)	1.0ml (10 ⁶ Cells/ml)
Human Dermal Fibroblasts (Fetal)	T2002	Homo sapien (human) dermal fibroblast feeder cells (adherent)	1.0ml (10 ⁶ Cells/ml)
Immortalized Mouse Embryonic Fibroblasts (Embryo)	T2003	Mus musculus (mouse) immortalized embryonic fibroblast feeder cells (adherent)	1.0ml (10 ⁶ Cells/ml)
SV40 Immortalized Human Dermal Fibroblasts (Fetal)	T2004	Homo sapien (human) SV40 immortalized dermal fibroblast feeder cells (adherent)	1.0ml (10 ⁶ Cells/ml)
MITC Immortalized Mouse Embryonic Fibroblasts (Embryo)	T2005	Mus musculus (mouse) MITC immortalized embryonic fibroblast feeder cells (adherent)	1.0ml (10 ⁶ Cells/ml)