

# Kaneka Easy DNA Extraction Kit Version 2 [Research Use Only]

For more information : [http://www.funakoshi.co.jp/exports\\_contents/80099](http://www.funakoshi.co.jp/exports_contents/80099)

Easy DNA extraction kit for routine template DNA

2 reagents and rapid around 10 minutes protocol

Extraction kit for cell lysates, animal and plant tissues, seed, bacteria, blood and feces



## Features

- Simple protocol
- Time saving - Around 10 minutes per sample for extraction
- Room Temperature Storage
- Broad range of sample types are compatible with this kit
  - Cell lysates, Animal tissues, Plant tissues, Seed, Bacteria, Blood and Feces
- 1 kit includes 250 preps (for Blood sample) or 50 preps (for other samples) of reagents

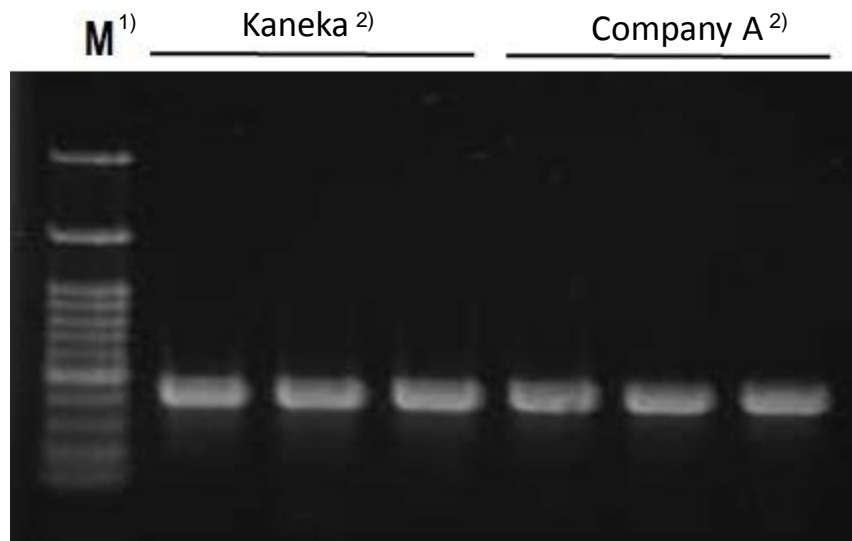
## Example Protocol

(For Plant Seeds Sample)

1. Put a 5 ~ 8 mm square piece of a seed (cut by scissors etc.) into a PCR tube. Add 100  $\mu$ L of Solution A to the tube and mix well by pipetting.
2. Incubate the PCR tube at 98°C for 8 minutes in a heat block or other heating equipment.
3. After the PCR tube is cooled, add 14  $\mu$ L of Solution B and mix well.
4. Stir the extract from Protocol 3 above well before use. Use 1 ~ 5  $\mu$ L of it as a template DNA for PCR (for a 50  $\mu$ L PCR reaction).

**Protocol for other samples are also available !**

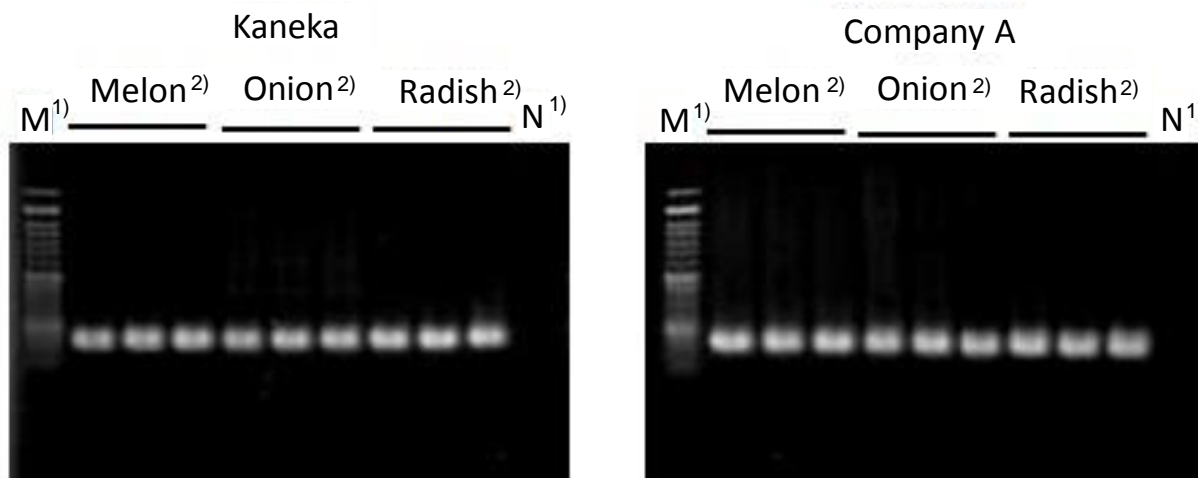
## Results



1) DNA ladder marker  
2) Number of sample: n=3

### Extraction from mouse tail sample

DNA were extracted from mouse tail sample with Kaneka kit or Company A kit and extracted DNA samples were analyzed by end point PCR.  
PCR data showed the same efficiency in extraction as Company A kit (around 13 minutes protocol).



1) DNA ladder marker 2) Number of sample: n=3

### Extraction from plant seed samples

DNA were extracted from plant seed samples (Melon, Onion, or Radish) with Kaneka kit or Company A kit and extracted DNA samples were analyzed by end point PCR.  
PCR data showed the same efficiency in extraction Company A kit (around 80 minutes protocol).

## Product Information

[Manufacturer : KNK]

Product Name	Size	Catalog #	Storage
Kaneka Easy DNA Extraction Kit Version2	1 kit	KN-T110005	RT

NOTE

※ All products here are research use only, not for diagnostic use.  
※ Specs might be changed for improvement without notice.

※ Company name and product name are trademark or registered mark.  
※ Please contact your local distributors for orders, quote request and inquiry.

Your Local Distributor



**Bio-REV Pte. Ltd.**

36 Toh Guan Road East, #01-39  
Enterprise Hub, Singapore 608 580  
Tel: (65) 6273-3022  
Fax: (65) 6273-3020  
Email: sales@bio-rev.com  
Technical Support: techserv@bio-rev.com

**funakoshi Co., Ltd.**

Address: 9-7 Hongo 2-Chome, Bunkyo-ku,  
Tokyo 113-0033 JAPAN  
Phone : +81-3-5684-6296  
Fax : +81-3-5684-6297  
Email : export@funakoshi.co.jp

ZF-Y07T-08 (2015.08)