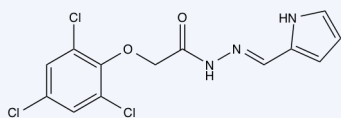


Cancer Stem Cells

Vismodegib

Hedgehog signaling antagonist that induces apoptosis in pancreatic cancer stem cells.¹ Medulloblastoma and basal-cell carcinoma stem cells have also been targeted by this reagent.^{2,3}



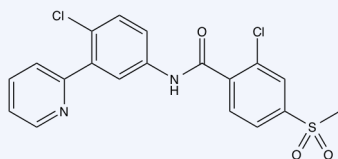
ML-239

10-2182

5 mg , 25 mg

ML-239

Cancer stem cells (CSC) are resistant to standard cancer treatments. ML-239 was discovered in a screen using CSC-like cells created by inducing human breast epithelial cells into an epithelial-to-mesenchymal transdifferentiated state. ML-239 was found to be selectively toxic to these cells ($IC_{50} = 1.2 \mu M$).⁴ Although its direct target has not yet been identified ML-239 is an important tool for research in selective killing of CSCs.



Vismodegib

10-1417

5 mg , 25 mg

Cyclopamine

Cyclopamine has been shown to deplete stem-like cancer cells in glioblastoma.⁵ Inhibition of Hh signaling impaired CML stem cell growth.⁶

10-1082

5 mg , 25 mg

DAPT

DAPT inhibited self-renewal and stem-ness maintenance of ovarian cancer stem-like cells.⁷ Breast cancer stem cell activity was reduced via inhibition on Notch activity.⁸

10-4514

5 mg , 25 mg

Niclosamide

Niclosamide has been identified as an inhibitor of breast cancer stem-like cells.⁹

10-2474

1g , 5 g

References

1. Singh, *et al.* 2011 PLoS One **6** e27306
2. Rudin, *et al.* 2009 N.Engl.J.Med. **361** 1173
3. Von Hoff *et al.* 2009 N.Engl.J.Med. **361** 1164
4. Carmody, *et al.* 2012 J. Biomol. Screening **17** 1204
5. Bar, *et al.* 2007 Stem Cells **25** 2524
6. Zhou, *et al.* 2009 Nature **458** 776
7. Jiang, *et al.* 2011 Chin.J.Cancer Res. **23** 140
8. Harrison *et al.* 2010 Cancer Res. **70** 709
9. Wang *et al.* 2013 PLoS One **8** e74538