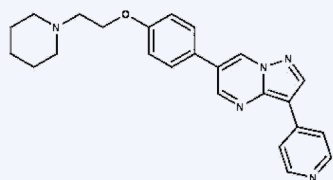


Autophagy



Dorsomorphin

STF-62247

Specifically induces autophagic cell death in VHL (von Hippel-Lindau)-deficient renal carcinoma cells¹ both *in vitro* (IC₅₀=625 nM) and *in vivo*. Renal cell carcinoma cell lines were radiosensitized by induction of autophagy following treatment with STF-62247². Cell permeable

10-1375

10 mg, 50 mg

Temozolomide

DNA alkylating agent with antitumor and antiangiogenic activity. Induces autophagy in a variety of cell lines.³ Clinically useful anticancer agent. Cell permeable.

10-2390

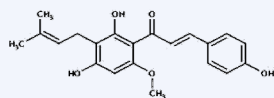
50 mg, 250 mg

Dorsomorphin

Potent, selective and ATP-competitive inhibitor of AMP-activated protein kinase (AMPK) (K_i = 109 nM)⁴. Also inhibits bone morphogenetic protein (BMP) type I receptors (ALK2, ALK3 and ALK6)⁵. Induces autophagy in cancer cell lines via a mechanism independent of AMPK inhibition.⁶

10-1029

5 mg, 25 mg



Xanthohumol

Xanthohumol

Binds to the N-terminal domain of valosin-containing protein (VCP), an essential protein for autophagosome maturation. Xanthohumol inhibits the function of VCP thereby impairing autophagosome maturation and resulting in accumulation of the microtubule-associated protein 1 light chain 3-II (LC3-II)⁷. Impairs prostate cancer cell growth and proliferation⁸. Cell permeable.

10-1188

10 mg, 50 mg

References

1. Turcotte *et al.* (2008) *Autophagy* 4 944
2. Anbalagan *et al.* (2012) *Radiother. Oncol.* 103 388
3. Natsumeda *et al.* (2011) *Neuropathology* 31 486
4. Zhou *et al.* (2001) *J. Clin. Invest.* 108 1167
5. Yu *et al.* (2008) *Nat.Chem.Biol.* 4 33
6. Vucicevic *et al.* (2011) *Autophagy* 7 40
7. Sasazawa *et al.* (2012) *ACS Chem. Biol.* 7 892
8. Vene *et al.* (2012) *Mol. Med.* 18 1292