



The days of comparing apples to apples are over!

Introducing Universal Mycoplasma Detection.

Introductory Promotional Offer **\$650/kit** (Usual Price \$1083)*

Universal Mycoplasma Detection from ATCC — a new PCR-based kit for the routine detection of mycoplasma DNA — from the leader in cell culture. When it comes to screening your cell lines for possible mycoplasma contamination, we know what you're looking for — we designed the Universal Mycoplasma Detection Kit with your needs in mind:

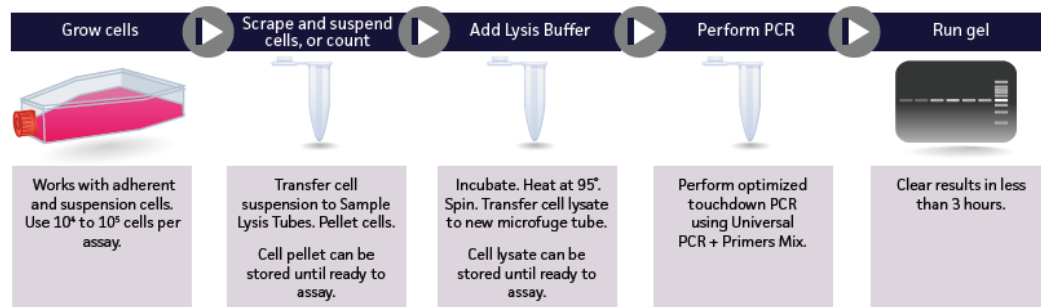
- **Superior Sensitivity:** Detects less than 10 *M. arginini* genomes/assay
- **Confirmed Specificity:** Does not detect *E. coli* or mammalian genomic DNA
- **Broad Detection Range:** Recognizes more than 60 mycoplasma species
- **Fast:** Results in less than 3 hours
- **Convenient:** Provides all components for detection in an easy-to-use format

Not all PCR-based kits are the same. See for yourself.

Superior,
Fast and
Convenient...



Easy-to-use



SEE FOR YOURSELF

You have many options for the routine detection of mycoplasma including other PCR-based kits, metabolic assays, and growth on selective media. Scientists at ATCC developed a rigorous model system to evaluate the performance of the Universal Mycoplasma Detection Kit compared to the most widely used commercially available products.

infect cell cultures. Once established, ten-fold serial dilutions were performed. At each step, the cells were counted as well as plated on selective medium to determine the number of colony forming units (CFU) per mL culture. Following the instructions provided for all the kits that were evaluated, each dilution was tested for the presence of mycoplasma.

ATCC® CCL-10™ BHK cells were infected with a sequence-verified strain of *M. orale*, one of the eight mycoplasma strains most likely to

Representative data is presented below.

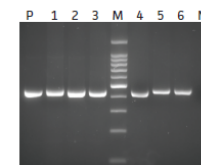
Summary of Results for BHK Cells Infected with *M. orale*

	Dilution					
	1	2	3	4	5	6
Number of Cells/mL	500,000	50,000	5,000	500	50	5
CFU/mL	2,208	154	13	2	0	0
ATCC	+++	+++	++	++	+	+
Supplier 1	++	+	+	+	+/-	+/-
Supplier 2*	+++	++	++	-	-	-
Supplier 3*	+	++	++	++	-	-

* Positive and negative scores were determined by following the Suppliers' instructions. Supplier 2 provides a metabolic assay for the detection of mycoplasma; Supplier 3 provides a PCR-ELISA test kit.

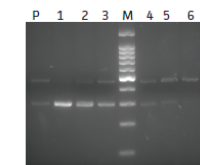
PCR gels were run for samples analyzed by Universal Mycoplasma Detection and the kit from Supplier 1. Suppliers 2 and 3 are kits that require an instrument for assay read-out. A distinct band was easily visualized in all samples when using the Universal Mycoplasma Detection Kit. Using the PCR kit from Supplier 1 gave less intense bands at all concentrations tested; the most dilute samples yielded ambiguous results. Instrumentation-based systems provided by Suppliers 2 and 3 were much less sensitive.

ATCC Universal Mycoplasma Detection



← Mycoplasma Band

Supplier 1



← Internal Control Band
← Mycoplasma Band

P=Positive control N=Negative control M= 100 bp Ladder Lanes labeled 1 through 6 correspond to the dilution series

Ordering Information

ATCC® No. 30-1012K Description Universal Mycoplasma Detection Kit

Size 40 assays



This Promotion is brought to you by:



* Pricing inclusive of shipping and handling charges. While stocks last. Promotion ends 30th June 2011.

© 2011 ATCC. The ATCC trademark and trade name, any and all ATCC catalog numbers, and any other trademarks listed in this publication are trademarks of the American Type Culture Collection unless indicated otherwise. These products are for laboratory use only. Not for human or diagnostic use. ATCC® products may not be resold, modified for resale, used to provide commercial services or to manufacture commercial products without prior ATCC written agreement.