

Protein Markers

Instruction Manual

- Opti-Protein Express Marker (~16kDa - ~100kDa)
- Opti-Protein Marker (~10kDa - ~175kDa)

Cat.No.: G494 (Opti-Protein Express Marker)
G252 (Opti-Protein Marker)

Size: 500 μ l (100 loads) Load: 5 μ l/lane

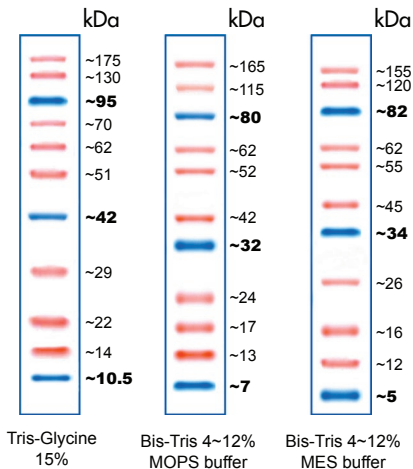
Storage: 4°C for up to 3 months, -20°C for 24 months



Applied Biological Materials Inc.
www.abmGood.com Tel: 1-866-757-2414
Address: Suite 8-13520 Crestwood Place,
Richmond, BC, Canada V6V 2G2

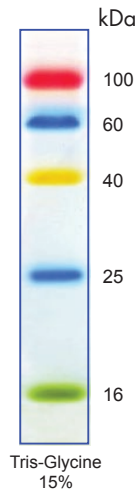
Opti-Protein Marker

Cat.No.: G252



Opti-Protein Express Marker

Cat.No.: G494



Opti-Protein and Opti-Protein Express Markers provide a choice of protein markers with different ranges, consisted of proteins that resolve into sharp, tight bands for easy and reliable reference. Both protein markers allow you to monitor protein separation during electrophoresis, to estimate or validate the molecular weight of the protein of interest and to evaluate western blot transfer efficiency. The marker proteins are strategically colored with different chromophores for easy tracking and identification within your gel or on the blot.

Opti-Protein Marker: ~10 kDa - ~175 kDa (11 bands)

Opti-Protein Express Marker: ~16 kDa - ~100 kDa (5 bands)