



# HydroCell™

For more information : [https://www.funakoshi.co.jp/exports\\_contents/81212](https://www.funakoshi.co.jp/exports_contents/81212)

**HydroCell™** is a low cell binding cultureware. On its surface, super hydrophilic polymer is immobilized at nano-thickness. This hydrophilic character helps the formation of embryoid bodies of ES/iPS cells or spheroids in culture.

**HydroCell™** shows lower cell binding than other brands' low cell binding cultureware.

## Features

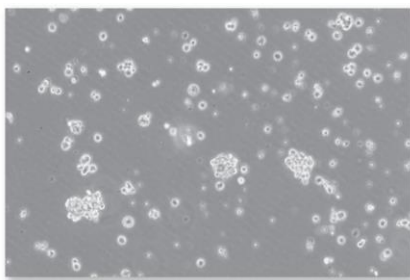
- Super hydrophilic polymer is immobilized to the surface of the cultureware at nano-thickness.
- Lowest attachment rate
- Three formats :  
Microplates, Dishes and Flask types.



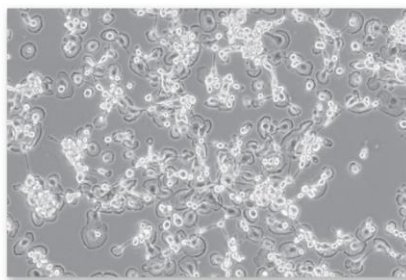
## Application

- Formation of embryoid bodies of ES/iPS cells or anchorage-independent colonies
- Differentiation such as cartilage (spheroid formation)
- Culture and storage of macrophage/immune cells
- Screening of anti-cancer drugs (replacement for soft agar assays)

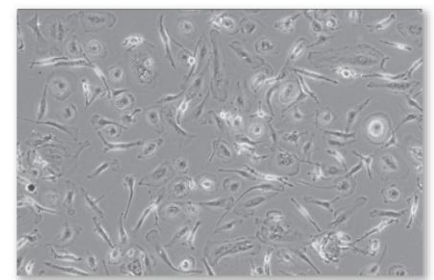
## Example Data



*HydroCell™*



Other brands' alternative



Non-treated

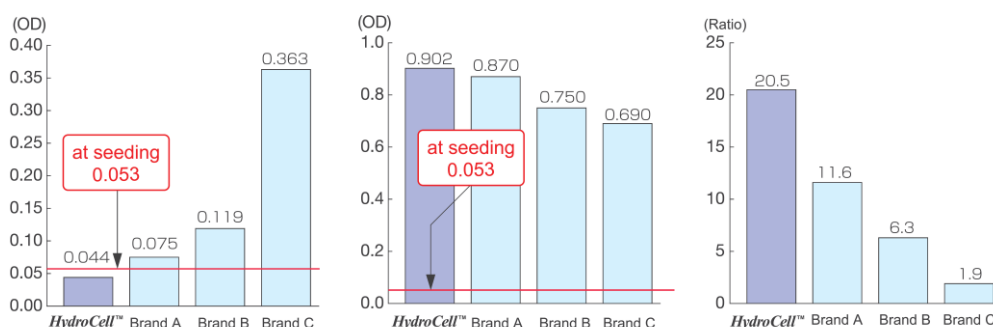
**Fig.1 Comparison to other brand products**

Mouse macrophages were incubated for 3 days in (1) *HydroCell™* (2) another brand's product and (3) non-treated cultureware. Only *HydroCell™* allowed uniform suspension culture (>99% of the cells remained in suspension), simple cell dissociation and harvesting by pipetting.

**Fig.2 Comparison of attachment rate**

Normal rat kidney (NRK) cells were seeded in *HydroCell™* or other brands' alternatives. Cell adhesion rate was determined at seeding and after 5 days of incubation.

The proliferation of anchorage-dependent cells were suppressed (left) and anchorage-independent cells were promoted (center and right). The data shows *HydroCell™* is superior than those of other brands' products.



## ■ Microplate Type

Product Name	Code	Size	Storage
<i>HydroCell</i> , 6 well Multiwell, Flat Bottom	CS2018	5 pieces	RT
	CS2008	20 pieces	RT
<i>HydroCell</i> , 12 well Multiwell	CS2012	5 pieces	RT
	CS2002	20 pieces	RT
<i>HydroCell</i> , 24 well Multiwell	CS2016	5 pieces	RT
	CS2006	20 pieces	RT
<i>HydroCell</i> , 96 well Multiwell, Round Bottom	CS2017	5 pieces	RT
	CS2007	20 pieces	RT
<i>HydroCell</i> , 96 well Multiwell, Flat Bottom	CS2011	5 pieces	RT
	CS2001	20 pieces	RT

## ■ Dish Type

Product Name	Code	Size	Storage
<i>HydroCell</i> , 3.5 cm Dish	CS2015	5 pieces	RT
	CS2005	20 pieces	RT
<i>HydroCell</i> , 6 cm Dish	CS2014	5 pieces	RT
	CS2004	20 pieces	RT
<i>HydroCell</i> , 10 cm Dish	CS2013	5 pieces	RT
	CS2003	20 pieces	RT

## ■ FlaskType

Product Name	Code	Size	Storage
<i>HydroCell</i> , T25 Flask	CSF025	12 pieces	RT
<i>HydroCell</i> , T75 Flask	CSF075	20 pieces	RT

## NOTE

※ All products here are research use only, not for diagnostic use.  
 ※ Specs might be changed for improvement without notice.

※ Company name and product name are trademark or registered mark.  
 ※ Please contact your local distributors for orders, quote request and inquiry.

Your Local Distributor



**Bio-REV Pte. Ltd.**

36 Toh Guan Road East, #01-39  
 Enterprise Hub, Singapore 608 580  
 Tel: (65) 6273-3022  
 Fax: (65) 6273-3020  
 Email: sales@bio-rev.com  
 Technical Support: techserv@bio-rev.com

**Funakoshi Co., Ltd.**

Address: 9-7 Hongo 2-Chome, Bunkyo-ku,  
 Tokyo 113-0033 JAPAN  
 Phone : +81-3-5684-6296  
 Fax : +81-3-5684-6297  
 Email : export@funakoshi.co.jp