

Rhodopsin



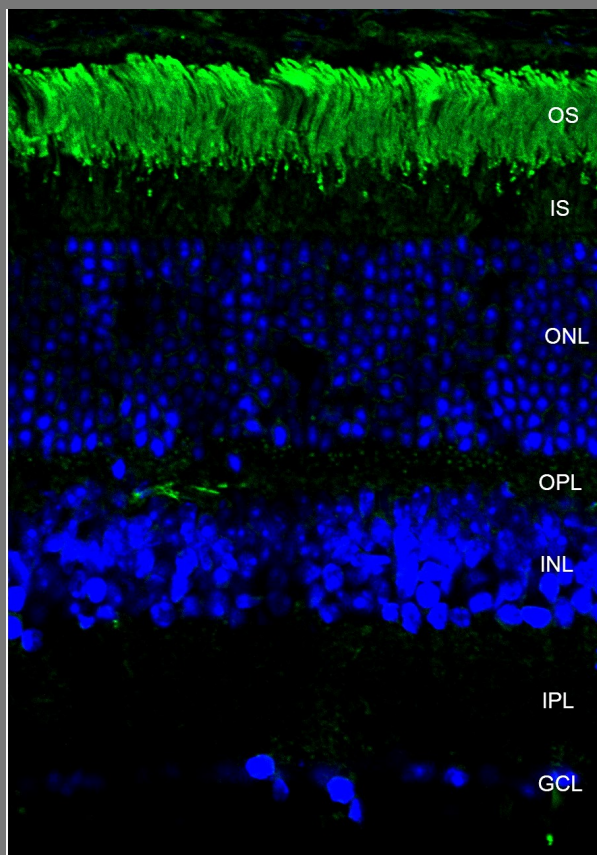
Antibodies • Proteins • Kits • Small Molecules

Rhodopsin Antibodies

Description	Catalog No.	Size	Retail Price
Mouse Anti- Rhodopsin , 4D2 Monoclonal Antibody <i>Species Reactivity:</i> Hu/Ms/Rt/Bv/Pg/Rb/Sh/Fs/Bd/Am/Xe	SMC-176D	100µg	\$ 294.00
Mouse Anti- Rhodopsin , 1D4 Monoclonal Antibody <i>Species Reactivity:</i> Vertebrates	SMC-177D	100µg	\$ 294.00

Rhodopsin Antibody, Clone 4D2

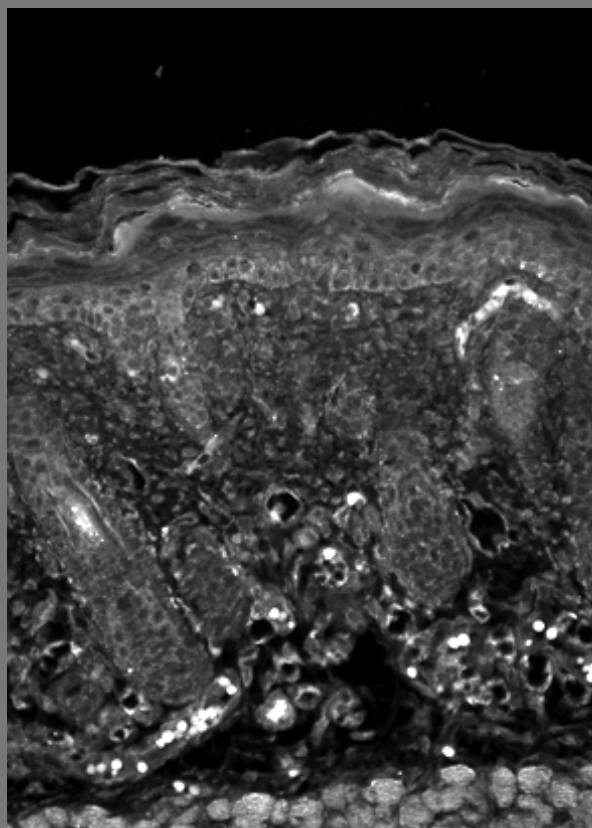
Cat. No. SMC-176 Available in 100µg



Confocal image of mouse retina labeled for Rhodopsin using SMC-176 antibody and counterstained with the nuclear stain DAPI (blue). Labeling (Green) is primarily restricted to the photoreceptor outer segment (OS). Layers of the retina: IS – inner segment; ONL – outer nuclear layer; OPL – outer plexiform layer; INL – inner nuclear layer; IPL – inner plexiform layer; GCL – ganglion cell layer.

Rhodopsin Antibody, Clone 1D4

Cat. No. SMC-177 Available in 100µg



Immunofluorescent detection of Rhodopsin using Anti-Rhodopsin monoclonal antibody, clone 1D4 (Catalog # SMC-177) in a section of mouse back-skin.