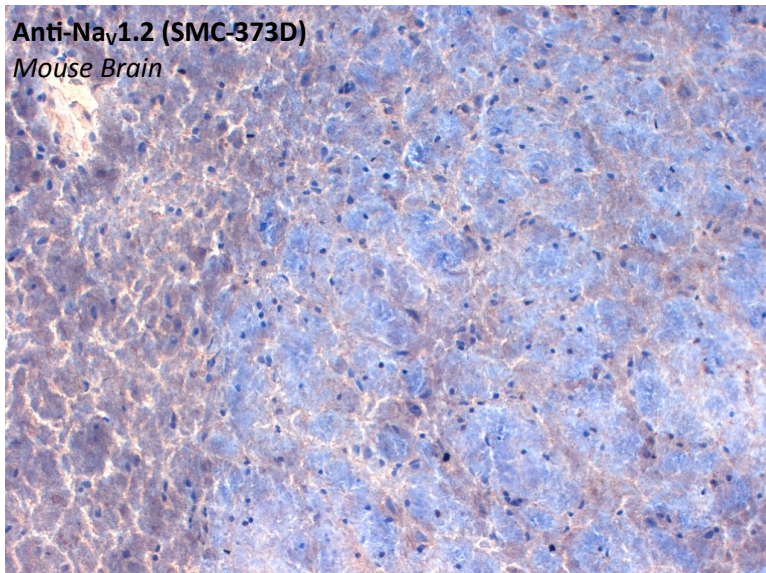


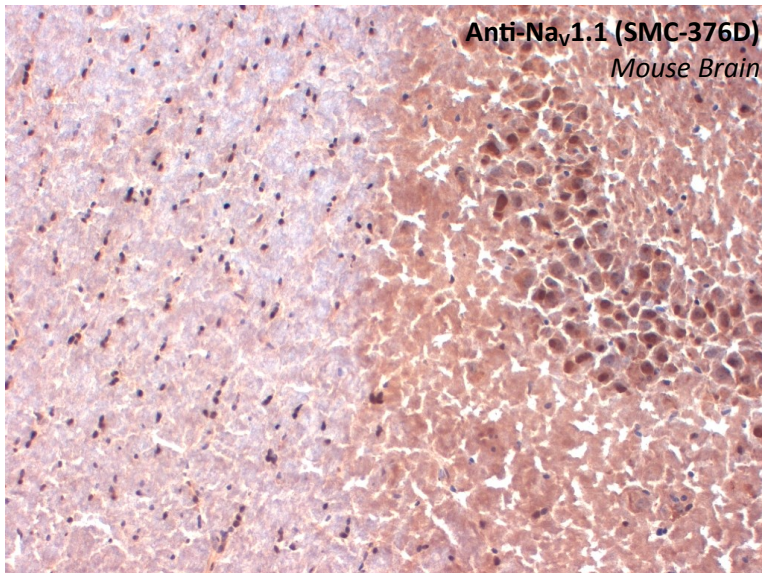
# Na<sub>v</sub> Channels

## Voltage-Gated Sodium Channel Antibodies

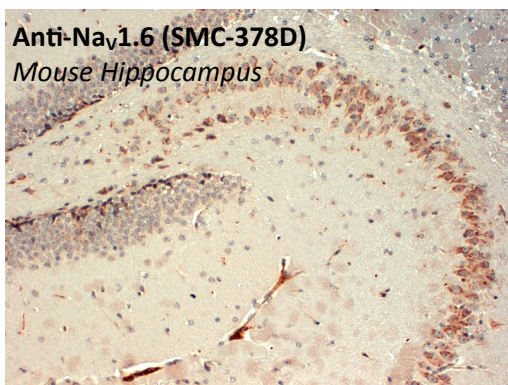
**Anti-Na<sub>v</sub>1.2 (SMC-373D)**  
*Mouse Brain*



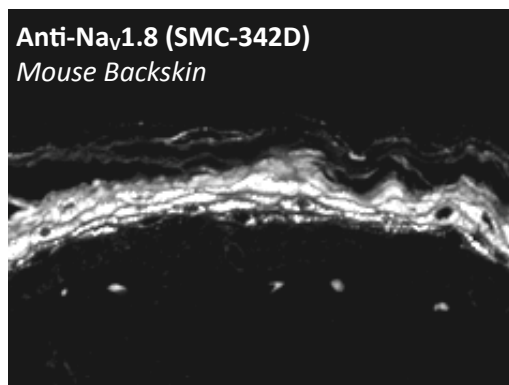
**Anti-Na<sub>v</sub>1.1 (SMC-376D)**  
*Mouse Brain*



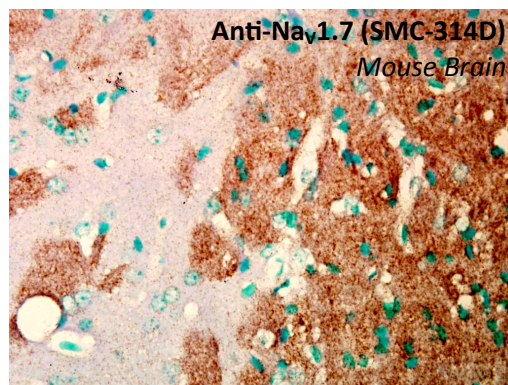
**Anti-Na<sub>v</sub>1.6 (SMC-378D)**  
*Mouse Hippocampus*



**Anti-Na<sub>v</sub>1.8 (SMC-342D)**  
*Mouse Backskin*



**Anti-Na<sub>v</sub>1.7 (SMC-314D)**  
*Mouse Brain*



### Description

### Catalog No.

### Size

Mouse Anti-**Na<sub>v</sub>1.1**, S74-71 Monoclonal Antibody  
*Species Reactivity: Hu/Ms/Rt*

SMC-376D

100µg

Mouse Anti-**Na<sub>v</sub>1.2**, S69-3 Monoclonal Antibody  
*Species Reactivity: Hu/Ms/Rt*

SMC-373D

100µg

Mouse Anti-**Na<sub>v</sub>1.6**, S87A-10 Monoclonal Antibody  
*Species Reactivity: Hu/Ms/Rt*

SMC-378D

100µg

Mouse Anti-**Na<sub>v</sub>1.7**, S68-6 Monoclonal Antibody  
*Species Reactivity: Hu/Ms/Rt*

SMC-314D

100µg

Mouse Anti-**Na<sub>v</sub>β2**, S395-68 Monoclonal Antibody  
*Species Reactivity: Hu/Ms/Rt*

SMC-485D

100µg

Mouse Anti-**Na<sub>v</sub>β3**, S396-29 Monoclonal Antibody  
*Species Reactivity: Ms/Rt*

SMC-490D

100µg