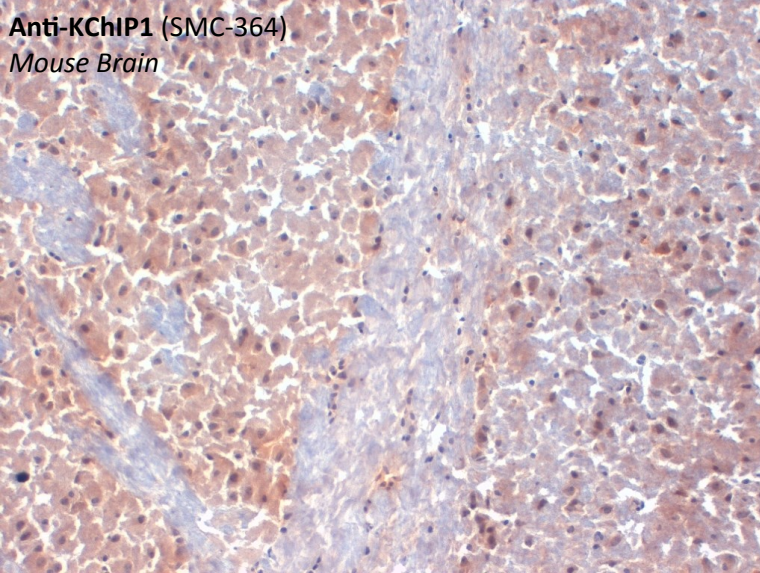
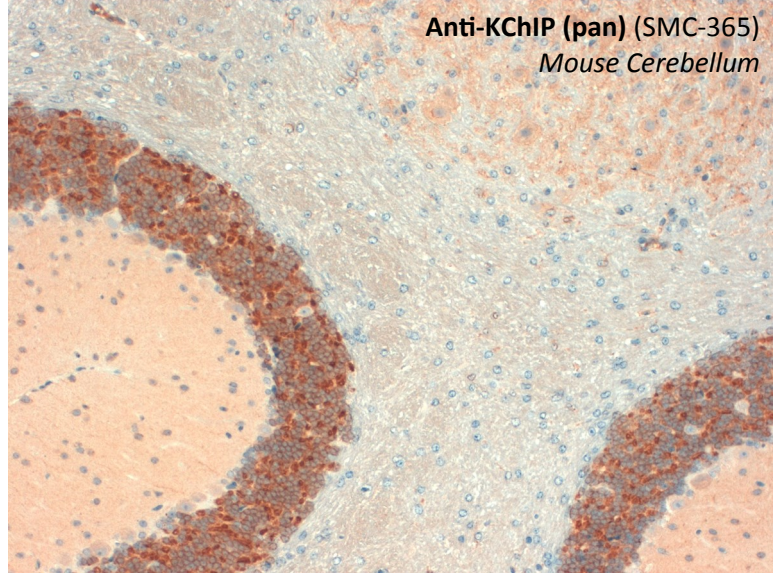


Potassium Channel Interacting Protein (KChIP) Antibodies

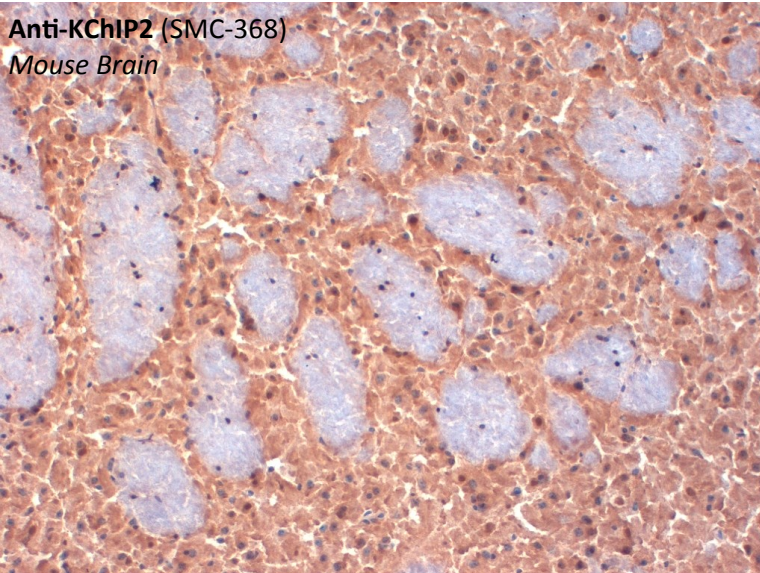
Anti-KChIP1 (SMC-364)
Mouse Brain



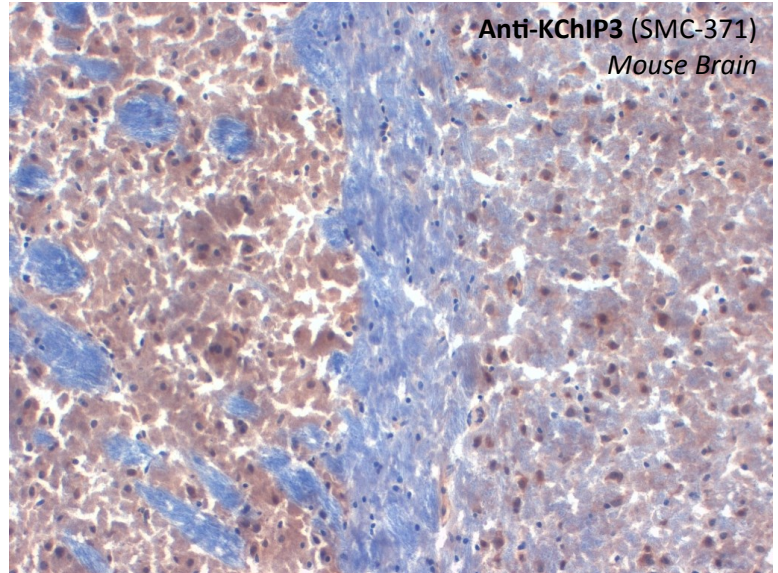
Anti-KChIP (pan) (SMC-365)
Mouse Cerebellum



Anti-KChIP2 (SMC-368)
Mouse Brain



Anti-KChIP3 (SMC-371)
Mouse Brain



Description	Catalog No.	Size
Mouse Anti- KChIP1 Monoclonal Antibody <i>Species Reactivity: Hu/Ms/Rt</i>	SMC-364D	100µg
Mouse Anti- KChIP2 Monoclonal Antibody <i>Species Reactivity: Hu/Ms/Rt</i>	SMC-368D	100µg
Mouse Anti- KChIP3 Monoclonal Antibody <i>Species Reactivity: Hu/Ms/Rt</i>	SMC-371D	100µg
Mouse Anti- KChIP (pan) Monoclonal Antibody <i>Species Reactivity: Hu/Ms/Rt</i>	SMC-365D	100µg

For a complete list of available products, please visit: www.stressmarq.com

Phone: +1 250 294 9065

Fax: +1 250 294 9025

E-mail: sales@stressmarq.com