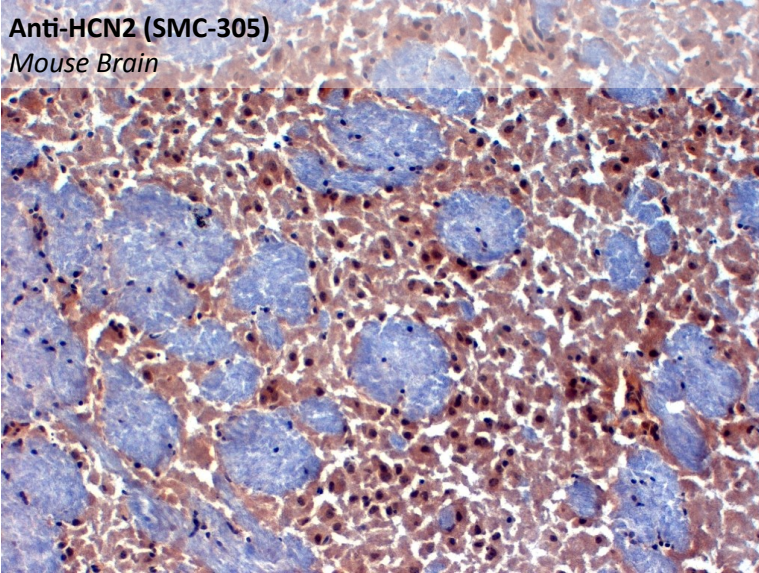


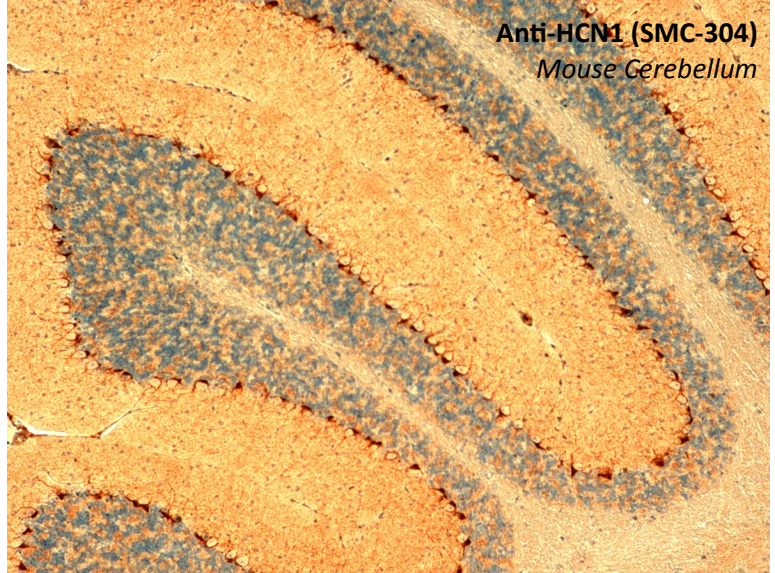
# HCN Channels

## Hyperpolarization-activated cyclic nucleotide-gated Channel Antibodies

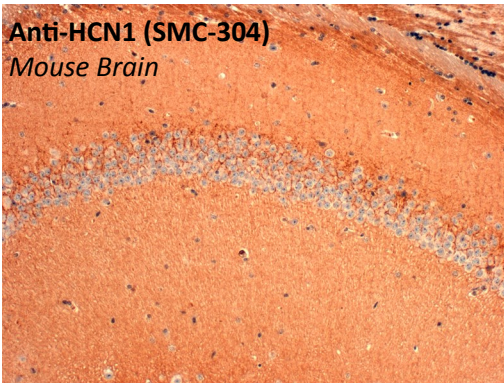
**Anti-HCN2 (SMC-305)**  
*Mouse Brain*



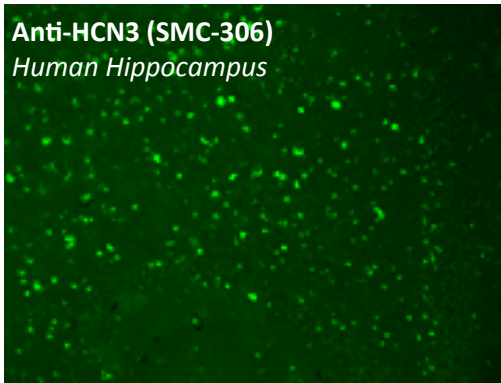
**Anti-HCN1 (SMC-304)**  
*Mouse Cerebellum*



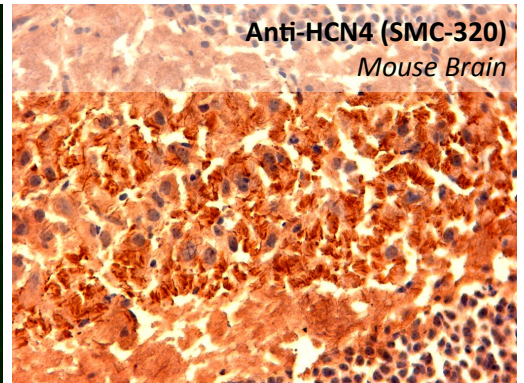
**Anti-HCN1 (SMC-304)**  
*Mouse Brain*



**Anti-HCN3 (SMC-306)**  
*Human Hippocampus*



**Anti-HCN4 (SMC-320)**  
*Mouse Brain*



### Description

### Catalog No.

### Size

Mouse Anti-**HCN1**, S70-28 Monoclonal Antibody  
*Species Reactivity: Hu/Ms/Rt*

SMC-304D

100µg

Mouse Anti-**HCN2**, S71-37 Monoclonal Antibody  
*Species Reactivity: Ms/Rt*

SMC-305D

100µg

Mouse Anti-**HCN3**, S141-28 Monoclonal Antibody  
*Species Reactivity: Ms/Rt*

SMC-306D

100µg

Mouse Anti-**HCN4**, S114-10 Monoclonal Antibody  
*Species Reactivity: Hu/Ms/Rt*

SMC-320D

100µg