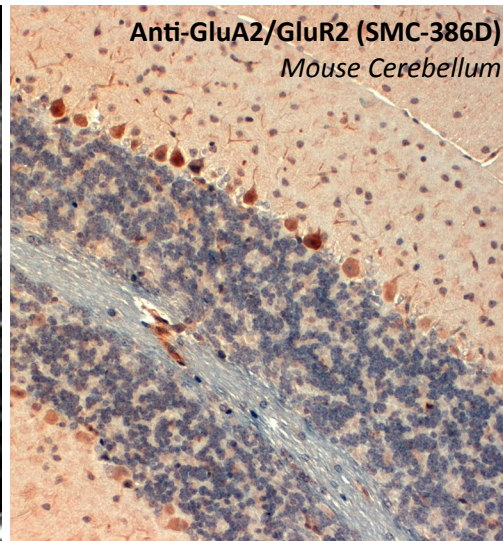
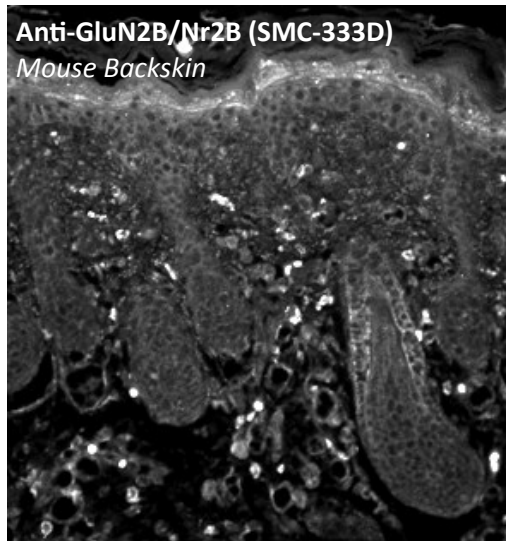


Glutamate Receptors

Glutamate Receptor Antibodies



Type	Description	Catalog No.	Size
AMPA	Mouse Anti- GluA1/GluR1 , S355-1 Monoclonal Antibody <i>Species Reactivity: Rt/Ms</i>	SMC-440D	100µg
	Mouse Anti- GluA2/GluR2 , S21-32 Monoclonal Antibody <i>Species Reactivity: Hu/Rt/Ms</i>	SMC-386D	100µg
NMDA	Mouse Anti- GluN1/NR1 , S308-48 Monoclonal Antibody <i>Species Reactivity: Hu/Rt/Ms</i>	SMC-410D	100µg
	Mouse Anti- GluN2A/NR2A , S327-95 Monoclonal Antibody <i>Species Reactivity: Hu/Rt/Ms</i>	SMC-429D	100µg
	Mouse Anti- GluN2A/NR2A , S327A-38 Monoclonal Antibody <i>Species Reactivity: Hu/Rt/Ms</i>	SMC-434D	100µg
	Mouse Anti- GluN2B/NR2B , S59-36 Monoclonal Antibody <i>Species Reactivity: Hu/Rt/Ms</i>	SMC-337D	100µg
	Mouse Anti- GluN2B/NR2B , S59-20 Monoclonal Antibody <i>Species Reactivity: Hu/Rt/Ms</i>	SMC-333D	100µg
Metabotropic	Mouse Anti- mGluR1/5 , S75-33 Monoclonal Antibody <i>Species Reactivity: Hu/Rt/Ms</i>	SMC-407D	100µg
	Mouse Anti- mGluR1/5 , S75-33 Monoclonal Antibody <i>Species Reactivity: Hu/Rt/Ms</i>	SMC-419D	100µg