

Antibodies

Ion Channels

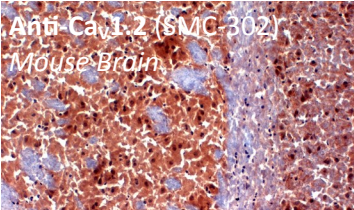
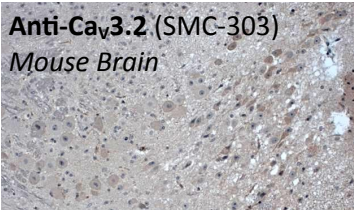


Antibodies • Proteins • Kits • Small Molecules

Ion Channel Antibodies

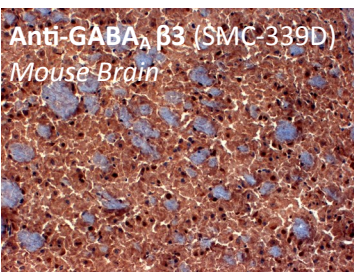
CALCIUM CHANNELS

Ca_v1.2, S57-46
Ca_v1.3, S48A-9
Ca_v1.3, S38-8
Ca_v3.1, S178A-9
Ca_v3.2, S55-10
Ca_vβ1, S7-18
Ca_vβ2, S8b-1
Ca_vβ4, S10-7
TARPy2, S245-1
TARPy2/4/8, S245-36



GABA RECEPTORS

GABA_A Receptor α1, S95-35
GABA_A Receptor α2, S399-19
GABA_A Receptor α4, S398A-34
GABA_A Receptor α5, S415-24
GABA_A Receptor β1, S96-55
GABA_A Receptor β3, S87-25
GABA_A Receptor ε, S413-67
GABA_A Receptor δ, S151-3
GABA_B Receptor 1, S93A-49
GABA_B Receptor 2, S81-2



GLUTAMATE RECEPTORS

AMPA

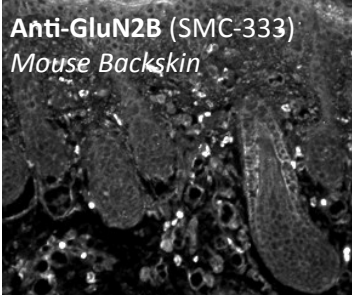
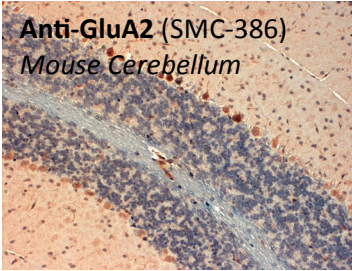
GluA1/GluR1, S355-1
GluA2/GluR2, S21-32

NMDA

GluN1/NR1, S308-48
GluN2A/NR2A, S327-95
GluN2A/NR2A, S327A-38
GluN2B/NR2B, S59-36
GluN2B/NR2B, S59-20

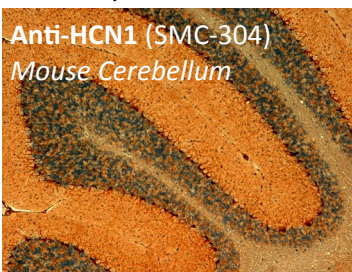
Metabotropic

mGluR1/5, S75-33
mGluR1/5, S75-33



HCN CHANNELS

HCN1, S70-28
HCN2, S71-37
HCN3, S141-28
HCN4, S114-10



POTASSIUM CHANNELS

Calcium-Activated

BK β2, S14-16
BK β3a, S20-78
BK β4, S3-26
Slo1, S11-33
Slo2.1, S25-35
Slo2.2, S124B-38
Slo3, S36-15

Inward-Rectifying

K_{ir}2.1, S37A-10
K_{ir}2.2, S26A-23
K_{ir}2.3, S43-6
K_{ir}6.1, S366-60

Tandem Pore Domain

TASK1, S374-48

Voltage-Gated

KCNQ1, S53-32
KCNQ2, S40B-18
KCNQ4, S18A-3
K_v1.1 (EC), S72-16
K_v1.1, S16B-8
K_v1.2, S4-11
K_v1.3, S2-16
K_v1.4, S39-25
K_v1.5, S7-45
K_v1.6, S37-89
K_v2.1 (EC), S75-41
K_v2.1, S13-31
K_v2.1, S6-60
K_v2.2, S57-1
K_v3.1, S112B-14
K_v3.2, S410-17
K_v3.4, S23-27
K_v4.2, S47-42
K_v4.3, S17-70
K_vβ (pan), S40-17
K_vβ1.1, S19-36
K_vβ1.2, S9-40
K_vβ2, S89-34

SODIUM CHANNELS

Epithelial

ENaC Alpha
ENaC Beta
ENaC Gamma

Leak

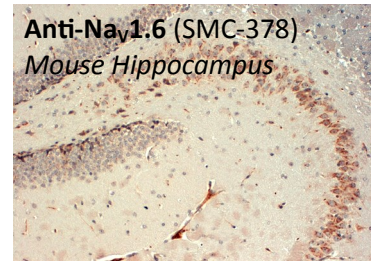
NALCN, S185-7

Proton-Gated

ASIC1, S271-44

Voltage-Gated

Na_v1.1, S74-71
Na_v1.2, S69-3
Na_v1.6, S87A-10
Na_v1.7, S68-6
Na_v1.8, S134-12
Na_v β2, S395-68
Na_v β3, S396-29



TRP CHANNELS

TRPC4, S77-15
TRPC5, S67-15
TRPC7, S64A-36
TRPM7, S74-25
TRPV3, S15-4
TRPV3, S15-39



OTHER ION CHANNELS

CNGA1/3, S36-12
VDAC, S36-12

DYES

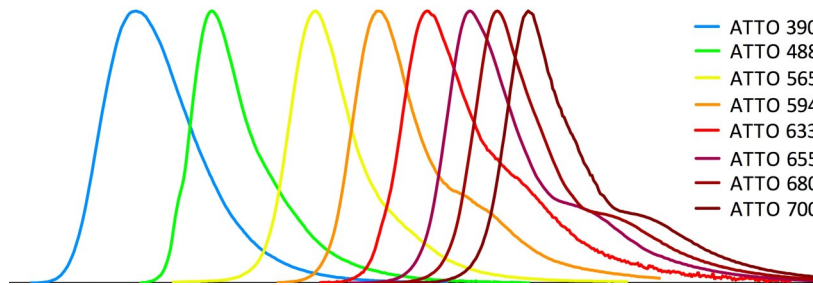


Antibodies • Proteins • Kits • Small Molecules

Primary Antibody Fluorescent and Enzyme Conjugates

StressMarq's complete primary antibody portfolio is now available conjugated to **13 different fluorescent dyes** as well as **biotin, streptavidin and enzymes!**

Applications include: **WB, IHC, IF, ICC, Flow Cytometry, ELISA, and FRET.**



Label	Max. Excitation	Max. Emission	Extinction Coefficient	Emission	Substitute for:
ATTO 390	390	479	24000		
FITC	494	520	73000		Alexa Fluor 488
ATTO 488	501	523	90000		Alexa Fluor 488 FITC
R-PE	535	575	2000000		
ATTO 565	563	592	120000		Cy3.5 ROX™ Alexa Fluor 546 Alexa Fluor 555 Alexa Fluor 568
PE/ATTO 594	535	627	N/A		
ATTO 594	601	627	80000		Alexa Fluor 594 Texas Red
ATTO 633	629	657	130000		Alexa Fluor 633
APC	650	670	700000		
PerCP	482	677	380000		
ATTO 655	663	684	125000		Cy5 Alexa Fluor 647 Alexa Fluor 660
ATTO 680	682	715	140000		Cy5.5 Alexa Fluor 680
ATTO 700	700	725	120000		Cy5.5 Alexa Fluor 700

FREE SAMPLES — Test any antibody for free before you buy!

If our datasheets do not indicate whether our antibody is suitable for your application or species, we invite you to use our Trial Program! Sample antibodies (~12-15ug) will be provided free of charge, the only requirement is that you pay for shipping!

Please visit our website for further details: www.stressmarq.com/trial_program

OR
Scan this QR Code:



For a complete list of available products, please visit: www.stressmarq.com

Phone: +1 250 294 9065

Fax: +1 250 294 9025

E-mail: sales@stressmarq.com