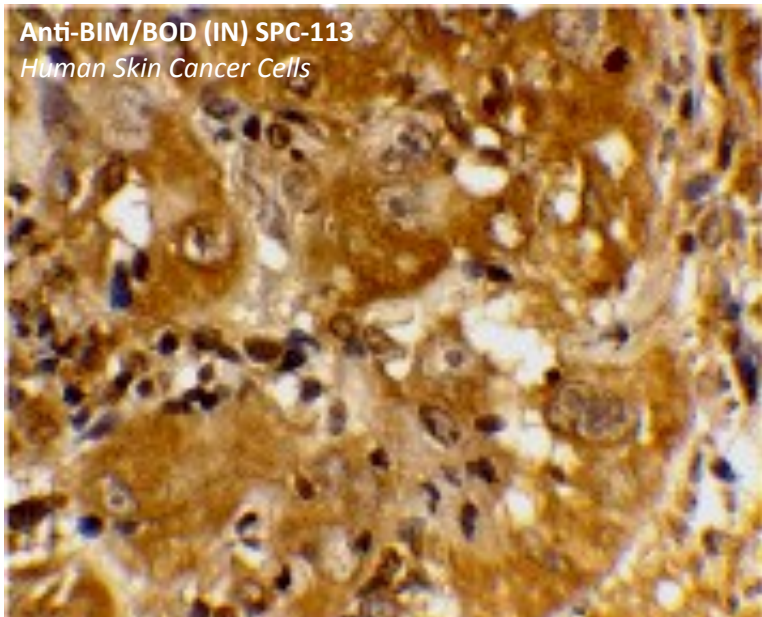


# BIM/BOD

## BCL2-like protein 11 Antibodies

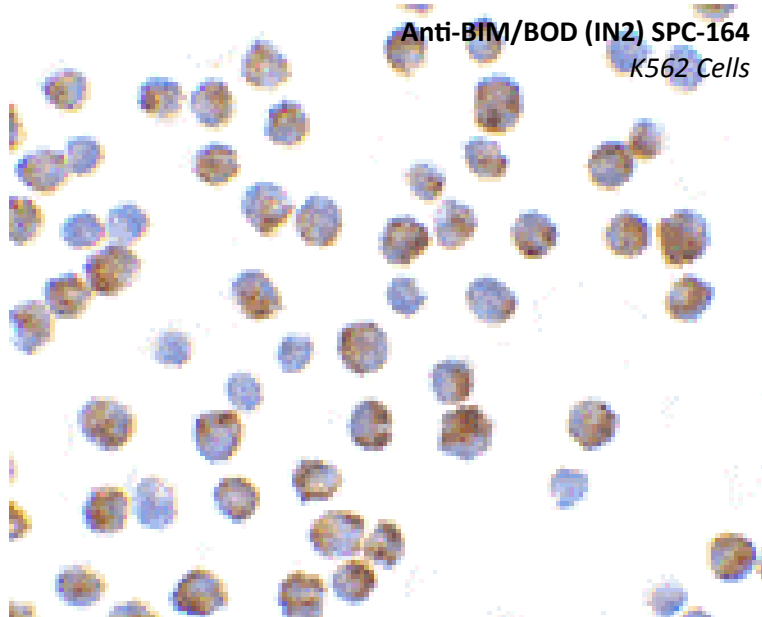
### Anti-BIM/BOD (IN) SPC-113

Human Skin Cancer Cells



### Anti-BIM/BOD (IN2) SPC-164

K562 Cells



## BIM/BOD (IN) and BIM/BOD (IN2) Antibodies

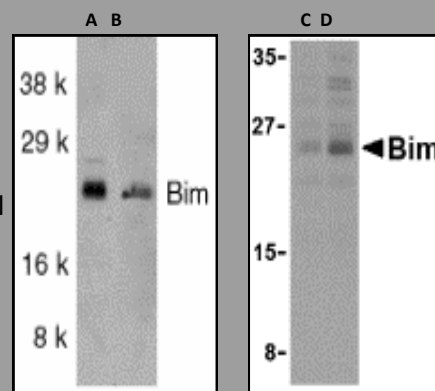
Cat. No. SPC-113 and SPC-164

Available in 25µg/100µg sizes

Western blot using K562 (A) and A549 (B) cell lysate using Anti-BIM (IN) at 1µg/ml (left panel), and K562 cell lysates at 2.5 and 5.0 µg/ml.

**LEFT:** Anti-BIM/BOD (IN) (Catalog# SPC-113) antibody, showing BIM band.

**RIGHT:** Anti-BIM/BOD (IN2) (Catalog# SPC-164) antibody, showing BIM band.



Description	Catalog No.	Size
Rabbit Anti- <b>BIM/BOD (IN)</b> , Polyclonal Antibody <i>Species Reactivity:</i> Hu/Ms/Rt	SPC-113C SPC-113D	25µg 100µg
Rabbit Anti- <b>BIM/BOD (IN2)</b> , Polyclonal Antibody <i>Species Reactivity:</i> Hu/Ms/Rt	SPC-164C SPC-164D	25µg 100µg

StressMarq Biosciences Inc. is able to provide you with both BIM/BOD (IN) and BIM/BOD (IN2) Antibodies. They have high target affinities and specificities, and their primary application is the Western Blot, although they are also used in other applications such as Immunohistochemistry (IHC), and Immunocytochemistry (ICC).

BIM/BOD interacts with critical regulators of apoptosis by either inhibiting or promoting cell death. It is ubiquitously expressed in multiple tissues and cell lines.