

# Alpha B Crystallin ELISA Kit



Antibodies • Proteins • Kits • Small Molecules

## Alpha B Crystallin StressXpress® ELISA Kit

Catalog No.

Size

Purpose: ELISA kit used to quantitate the Alpha B Crystallin concentration in samples

SKT-123-96

96-well

SKT-123-480

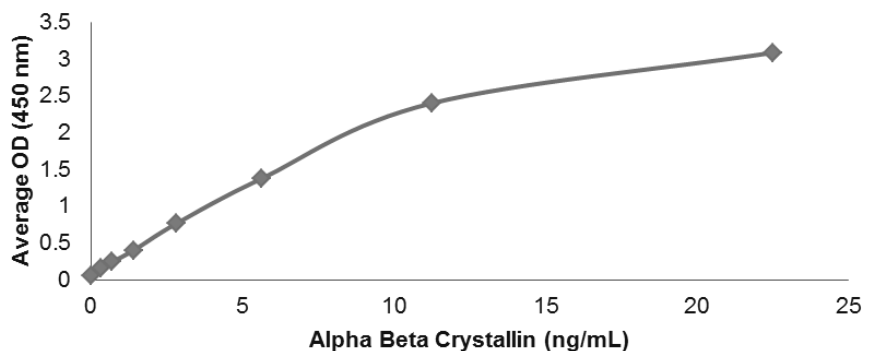
5 x 96-well

### Kit Specifications

<b>Species Reactivity:</b>	<b>Human</b>
<b>Sample Type:</b>	<b>Cell Lysates Tissue Extracts Serum Samples</b>
<b>Sensitivity:</b>	<b>0.009 ng/ml</b>
<b>Assay Range:</b>	<b>0.352-22.5 ng/ml</b>
<b>Incubation Time:</b>	<b>30 minutes</b>
<b>Storage Temp:</b>	<b>4°C</b>
<b>Shipping Temp:</b>	<b>4°C</b>

StressMarq Biosciences is pleased to provide you with StressMarq's StressXpress® Alpha B Crystallin ELISA Kit. The alpha-crystallins are major water-soluble lens structural proteins of the vertebrate eye that are related to the small heat shock protein family. The alpha-crystallins possess structural and functional similarities with Hsp25 and Hsp27. StressMarq's Alpha B Crystallin ELISA Kit is specific for human Alpha B Crystallin. It can be used in cell lysates, tissue extracts and serum samples. Our ELISA kit has a typical assay range of 90-1.41ng/mL.

### Typical Standard Curve



### Kit Components:

- Anti-Alpha B Crystallin Immunoassay Plate
- 5X Alpha B Crystallin Extraction Reagent
- Recombinant Alpha B Crystallin Standard
- Standard and Sample Diluent
- 10X Wash Buffer Concentrate
- Anti-Alpha B Crystallin Biotinylated Antibody Concentrate
- Anti-Alpha B Crystallin Biotinylated Antibody Diluent
- Streptavidin: HRP Concentrate
- Streptavidin: HRP Diluent
- TMB Substrate
- Stop Solution

For a complete list of available products, please visit: [www.stressmarq.com](http://www.stressmarq.com)

Phone: +1 250 294 9065

Fax: +1 250 294 9025

E-mail: [sales@stressmarq.com](mailto:sales@stressmarq.com)